

Greenpark Limerick

Road Lighting Proposal

All Road luminaires in an estate are on 6m poles, 30W luminaires, max 31m apart

Footpath Lighting on connecting footpaths and in park areas on 4m poles using 15W luminaires spaced approx 20m apart

Access road has 40W luminaires placed on the 8m poles spaced approx 30m apart



Table of contents

Greenpark Limerick	
Project Cover	1
Table of contents	2
MICROPLUS GERMANY MPG-1N-15W	
Luminaire Data Sheet	5
MICROPLUS GERMANY MPG-1N-40W	
Luminaire Data Sheet	6
MICROPLUS GERMANY MPG-1N-20W	
Luminaire Data Sheet	7
MICROPLUS GERMANY MPG-1N-30W	
Luminaire Data Sheet	8
Exterior Scene 1	
Planning data	9
Luminaires (coordinates list)	10
False Colour Rendering	16
Exterior Surfaces	
Road A	
Surface 1	
Isolines (E)	17
Greyscale (E)	18
Road B	
Surface 1	
Isolines (E)	19
Greyscale (E)	20
Road C	
Surface 1	
Isolines (E)	21
Greyscale (E)	22
Road D	
Surface 1	
Isolines (E)	23
Greyscale (E)	24
Road E	
Surface 1	
Isolines (E)	25
Greyscale (E)	26
Carpark	
Surface 1	
Isolines (E)	27
Carpark	
Surface 1	
Isolines (E)	28
Carpark	
Surface 1	
Isolines (E)	29
Carpark	
Surface 1	
Isolines (E)	30
Connecting footpath	
Surface 1	
Isolines (E)	31
Greyscale (E)	32
Connecting footpath	
Surface 1	



Table of contents

Isolines (E)	33
Greyscale (E)	34
Connecting footpath	
Surface 1	
Isolines (E)	35
Greyscale (E)	36
Road D	
Surface 1	
Isolines (E)	37
Greyscale (E)	38
Carpark	
Surface 1	
Isolines (E)	39
Carpark	
Surface 1	
Isolines (E)	40
Carpark	
Surface 1	
Isolines (E)	41
Carpark	
Surface 1	
Isolines (E)	42
Carpark	
Surface 1	
Isolines (E)	43
Carpark	
Surface 1	
Isolines (E)	44
Carpark	
Surface 1	
Isolines (E)	45
Access Road	
Surface 1	
Isolines (E)	46
Greyscale (E)	47
Connecting Footpath	
Surface 1	
Isolines (E)	48
Greyscale (E)	49
Carpark	
Surface 1	
Isolines (E)	50
Connecting Footpath	
Surface 1	
Isolines (E)	51
Park Paths	
Surface 1	
Isolines (E)	52
Greyscale (E)	53
Park Footpath	
Surface 1	
Isolines (E)	54
Park Footpath	
Surface 1	



Table of contents

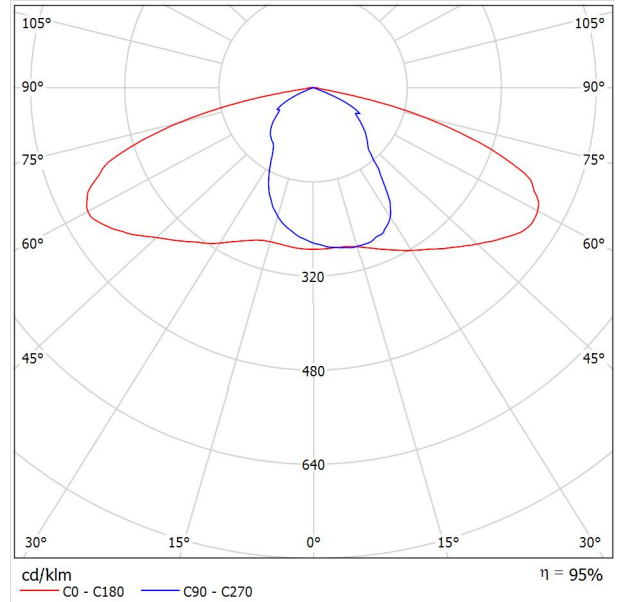
Isolines (E)	55
Park Footpath	
Surface 1	
Isolines (E)	56
Park Footpath	
Surface 1	
Isolines (E)	57
Park Footpath	
Surface 1	
Isolines (E)	58
Park Footpath	
Surface 1	
Isolines (E)	59
Street 1	
Planning data	60
Photometric Results	61
False Colour Rendering	63
Street 2	
Planning data	64
Photometric Results	66
False Colour Rendering	68



MICROPLUS GERMANY MPG-1N-15W / Luminaire Data Sheet

Luminous emittance 1:

See our luminaire catalog for an image of the luminaire.



Luminaire classification according to CIE: 100
CIE flux code: 41 76 97 100 95

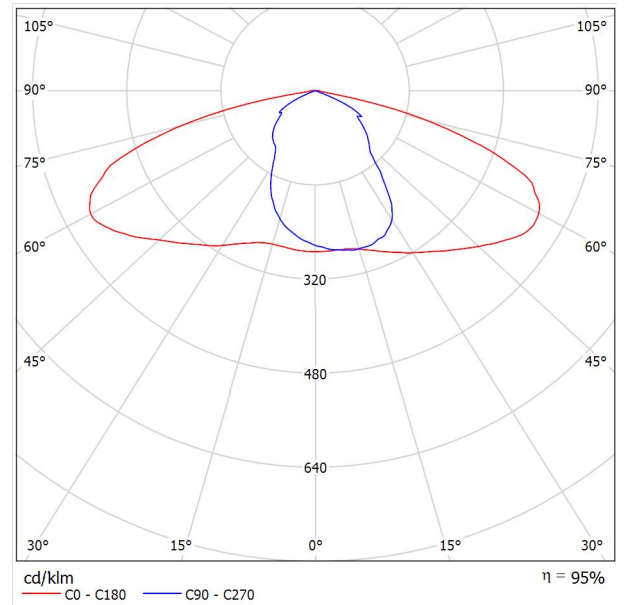
Due to missing symmetry properties, no UGR table can be displayed for this luminaire.



MICROPLUS GERMANY MPG-1N-40W / Luminaire Data Sheet

Luminous emittance 1:

See our luminaire catalog for an image of the luminaire.



Luminaire classification according to CIE: 100
CIE flux code: 41 76 97 100 95

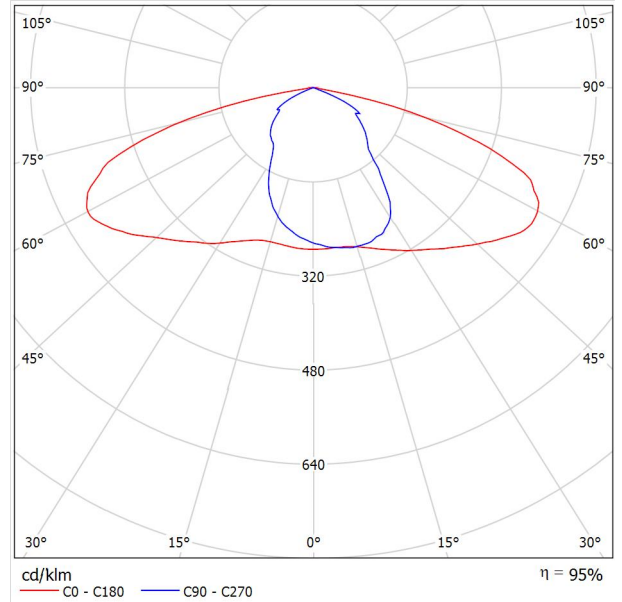
Due to missing symmetry properties, no UGR table can be displayed for this luminaire.



MICROPLUS GERMANY MPG-1N-20W / Luminaire Data Sheet

Luminous emittance 1:

See our luminaire catalog for an image of the luminaire.



Luminaire classification according to CIE: 100
CIE flux code: 41 76 97 100 95

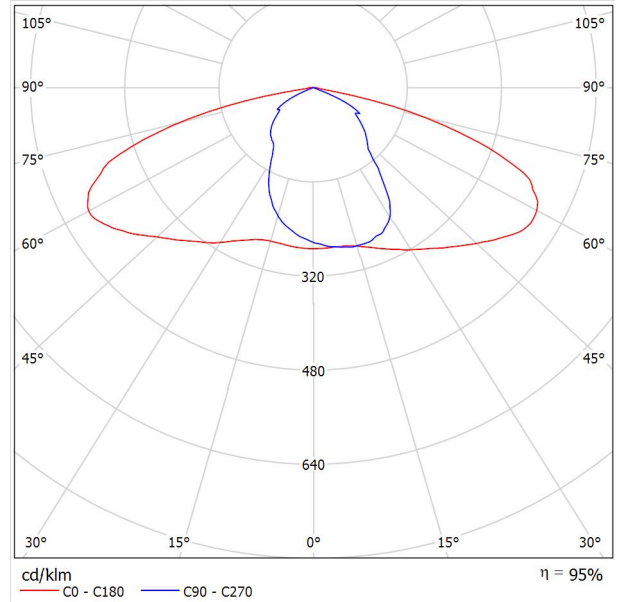
Due to missing symmetry properties, no UGR table can be displayed for this luminaire.



MICROPLUS GERMANY MPG-1N-30W / Luminaire Data Sheet

Luminous emittance 1:

See our luminaire catalog for an image of the luminaire.

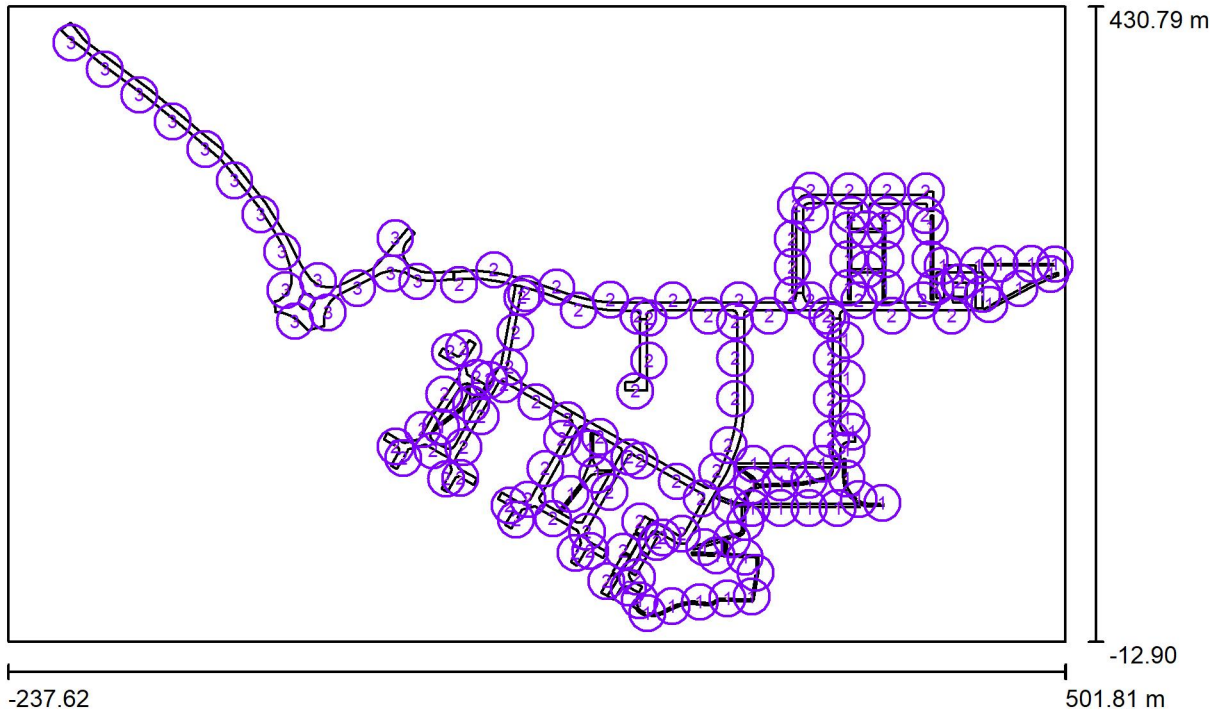


Luminaire classification according to CIE: 100
CIE flux code: 41 76 97 100 95

Due to missing symmetry properties, no UGR table can be displayed for this luminaire.



Exterior Scene 1 / Planning data



Maintenance factor: 0.80, ULR (Upward Light Ratio): 0.5%

Scale 1:5287

Luminaire Parts List

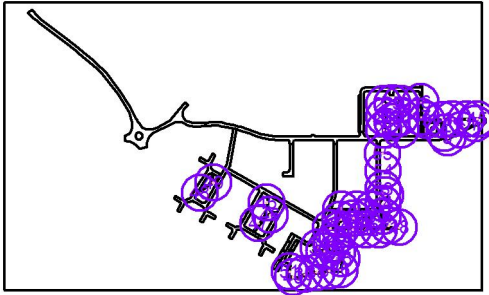
No.	Pieces	Designation (Correction Factor)	Φ (Luminaire) [lm]	Φ (Lamps) [lm]	P [W]
1	55	MICROPLUS GERMANY MPG-1N-15W (1.000)	2146	2250	16.2
2	86	MICROPLUS GERMANY MPG-1N-30W (1.000)	4275	4500	31.8
3	16	MICROPLUS GERMANY MPG-1N-40W (1.000)	5914	6226	44.0
			Total: 580277	Total: 610373	4329.8



Exterior Scene 1 / Luminaires (coordinates list)

MICROPLUS GERMANY MPG-1N-15W

2146 lm, 16.2 W, 1 x 1 x MICROLED DE 150lm/W (Correction Factor 1.000).



No.	Position [m]			Rotation [°]		
	X	Y	Z	X	Y	Z
1	283.827	111.242	4.000	0.0	0.0	180.0
2	307.827	111.242	4.000	0.0	0.0	180.0
3	331.827	111.242	4.000	0.0	0.0	180.0
4	443.790	229.788	4.000	5.0	0.0	90.0
5	448.451	222.641	4.000	0.0	0.0	-155.0
6	469.547	233.874	4.000	0.0	0.0	-155.0
7	491.367	243.868	4.000	0.0	0.0	-155.0
8	352.327	133.637	4.000	5.0	0.0	180.0
9	415.891	249.619	4.000	5.0	0.0	-180.0
10	440.683	249.755	4.000	5.0	0.0	180.0
11	348.790	100.978	4.000	0.0	0.0	93.0
12	357.092	86.621	4.000	0.0	0.0	153.0
13	455.805	250.972	4.000	0.0	0.0	-180.0
14	477.920	250.972	4.000	0.0	0.0	-180.0
15	494.389	250.951	4.000	0.0	0.0	-180.0
16	407.113	276.999	4.000	0.0	0.0	-90.0
17	407.113	254.135	4.000	0.0	0.0	-90.0
18	373.661	83.894	4.000	0.0	0.0	180.0
19	375.838	274.254	4.000	0.0	0.0	90.0
20	375.838	254.254	4.000	0.0	0.0	90.0
21	375.838	234.254	4.000	0.0	0.0	90.0
22	349.755	274.254	4.000	0.0	0.0	-90.0
23	349.755	254.254	4.000	0.0	0.0	-90.0
24	349.755	234.254	4.000	0.0	0.0	-90.0
25	362.842	275.256	4.000	0.0	0.0	180.0
26	362.780	247.081	4.000	0.0	0.0	180.0
27	342.382	80.495	4.000	0.0	0.0	0.0
28	322.382	80.495	4.000	0.0	0.0	0.0

Exterior Scene 1 / Luminaires (coordinates list)

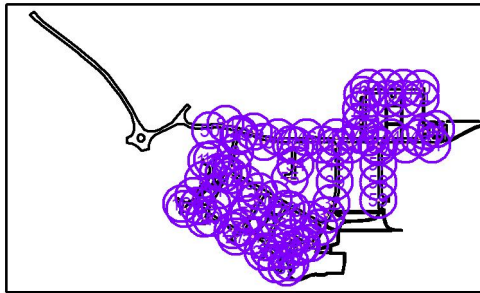
No.	Position [m]			Rotation [°]		
	X	Y	Z	X	Y	Z
29	277.820	70.568	4.000	0.0	0.0	90.0
30	282.382	80.495	4.000	0.0	0.0	0.0
31	267.535	82.629	4.000	0.0	0.0	-15.4
32	268.578	58.616	4.000	0.0	0.0	16.2
33	249.245	53.030	4.000	0.0	0.0	16.2
34	277.637	46.226	4.000	0.0	0.0	-2.0
35	285.107	35.276	4.000	0.0	0.0	-99.6
36	282.336	18.637	4.000	0.0	0.0	-99.6
37	265.348	17.241	4.000	0.0	0.0	176.1
38	245.906	14.794	4.000	0.0	0.0	176.1
39	226.622	11.769	4.000	0.0	0.0	-153.0
40	209.314	6.969	4.000	0.0	0.0	159.0
41	282.880	95.994	4.000	0.0	0.0	-148.8
42	302.692	98.033	4.000	0.0	0.0	-178.4
43	322.426	100.002	4.000	0.0	0.0	-169.6
44	348.790	121.020	4.000	0.0	0.0	90.0
45	168.801	122.193	4.000	0.0	0.0	-90.6
46	174.159	103.593	4.000	0.0	0.0	5.9
47	155.726	90.114	4.000	0.0	0.0	-125.6
48	65.148	137.006	4.000	0.0	0.0	36.2
49	86.203	152.960	4.000	0.0	0.0	36.2
50	302.382	80.495	4.000	0.0	0.0	0.0
51	203.941	15.764	4.000	0.0	0.0	66.0
52	257.765	47.196	4.000	0.0	0.0	-2.0
53	348.790	143.317	4.000	0.0	0.0	90.0
54	348.790	170.890	4.000	0.0	0.0	90.0
55	347.838	197.689	4.000	0.0	0.0	90.0



Exterior Scene 1 / Luminaires (coordinates list)

MICROPLUS GERMANY MPG-1N-30W

4275 lm, 31.8 W, 1 x 1 x MICROLED DE 150lm/W (Correction Factor 1.000).



No.	Position [m]			Rotation [°]		
	X	Y	Z	X	Y	Z
1	93.147	144.405	6.000	5.0	0.0	60.0
2	98.998	169.952	6.000	5.0	0.0	-119.5
3	117.192	203.039	6.000	5.0	0.0	77.6
4	121.769	227.611	6.000	5.0	0.0	79.1
5	80.956	122.844	6.000	5.0	0.0	60.0
6	59.433	120.393	6.000	0.0	0.0	-30.0
7	52.307	135.271	6.000	0.0	0.0	-120.0
8	67.403	159.922	6.000	0.0	0.0	-120.0
9	89.951	171.597	6.000	5.0	0.0	150.0
10	81.074	192.020	6.000	0.0	0.0	-119.9
11	71.570	189.508	6.000	0.0	0.0	151.0
12	109.337	166.685	6.000	5.0	0.0	-30.0
13	131.607	154.522	6.000	5.0	0.0	-30.1
14	153.582	141.952	6.000	5.0	0.0	-31.0
15	176.165	130.024	6.000	5.0	0.0	-29.6
16	33.328	123.500	6.000	0.0	0.0	-30.0
17	38.708	115.275	6.000	0.0	0.0	60.0
18	204.097	113.550	6.000	5.0	0.0	-30.0
19	229.889	98.965	6.000	5.0	0.0	-29.6
20	78.623	101.508	6.000	0.0	0.0	-30.0
21	68.704	100.746	6.000	0.0	0.0	-120.0
22	196.684	116.064	6.000	5.0	0.0	60.0
23	182.814	91.542	6.000	5.0	0.0	60.0
24	167.111	63.732	6.000	5.0	0.0	60.0
25	169.388	50.322	6.000	0.0	0.0	-30.0
26	159.107	48.988	6.000	0.0	0.0	-120.0
27	117.627	72.423	6.000	0.0	0.0	60.0
28	113.031	82.191	6.000	0.0	0.0	-30.0

Exterior Scene 1 / Luminaires (coordinates list)

No.	Position [m]			Rotation [°]		
	X	Y	Z	X	Y	Z
29	125.862	86.478	6.000	5.0	0.0	-120.0
30	149.649	128.614	6.000	5.0	0.0	-120.0
31	247.312	87.044	6.000	0.0	0.0	-120.0
32	233.548	62.425	6.000	0.0	0.0	-120.0
33	202.200	32.248	6.000	5.0	0.0	60.0
34	180.729	29.324	6.000	5.0	0.0	-120.0
35	196.108	24.874	6.000	0.0	0.0	-30.0
36	220.360	59.679	6.000	5.0	0.0	-30.0
37	258.045	106.160	6.000	0.0	0.0	-120.0
38	266.138	124.310	6.000	0.0	0.0	-110.0
39	270.823	156.751	6.000	0.0	0.0	-90.0
40	270.802	184.985	6.000	0.0	0.0	-90.0
41	270.793	210.867	6.000	0.0	0.0	-90.0
42	273.469	225.471	6.000	10.0	0.0	180.0
43	323.583	225.492	6.000	10.0	0.0	180.0
44	357.412	225.531	6.000	10.0	0.0	180.0
45	401.928	225.611	6.000	10.0	0.0	180.0
46	227.399	225.479	6.000	10.0	0.0	180.0
47	183.576	225.975	6.000	10.0	0.0	178.0
48	161.225	218.611	6.000	10.0	0.0	-15.5
49	124.482	230.312	6.000	10.0	0.0	-18.0
50	77.776	236.505	6.000	10.0	0.0	3.6
51	143.417	72.973	6.000	5.0	0.0	-30.0
52	137.984	107.958	6.000	5.0	0.0	-120.0
53	210.435	213.116	6.000	5.0	0.0	90.0
54	210.444	183.400	6.000	5.0	0.0	90.0
55	200.991	162.141	6.000	5.0	0.0	0.0
56	338.208	156.610	6.000	0.0	0.0	-90.0
57	338.187	184.808	6.000	0.0	0.0	-90.0
58	338.178	210.867	6.000	0.0	0.0	-90.0
59	338.208	128.654	6.000	0.0	0.0	-90.0
60	380.378	214.738	6.000	10.0	0.0	0.0
61	422.095	214.754	6.000	10.0	0.0	0.0
62	204.364	71.103	6.000	5.0	0.0	-120.0
63	216.170	56.681	6.000	5.0	0.0	60.0
64	427.463	238.280	6.000	5.0	0.0	90.0
65	428.232	238.280	6.000	5.0	0.0	-90.0
66	192.543	50.215	6.000	5.0	0.0	-120.0



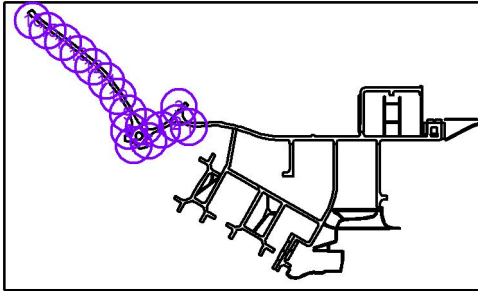
Exterior Scene 1 / Luminaires (coordinates list)

No.	Position [m]			Rotation [°]		
	X	Y	Z	X	Y	Z
67	323.652	302.018	6.000	5.0	0.0	180.0
68	350.474	301.907	6.000	5.0	0.0	180.0
69	377.296	301.797	6.000	5.0	0.0	180.0
70	404.117	301.686	6.000	5.0	0.0	180.0
71	323.188	285.415	6.000	5.0	0.0	0.0
72	352.223	285.305	6.000	5.0	0.0	0.0
73	376.832	285.194	6.000	5.0	0.0	0.0
74	403.653	285.084	6.000	5.0	0.0	0.0
75	313.348	291.768	6.000	5.0	0.0	-90.0
76	310.906	268.525	6.000	5.0	0.0	-90.0
77	310.906	248.990	6.000	5.0	0.0	-90.0
78	310.890	229.023	6.000	5.0	0.0	-90.0
79	410.858	234.859	6.000	0.0	0.0	-90.0
80	202.927	214.717	6.000	10.0	0.0	0.0
81	252.225	214.732	6.000	10.0	0.0	0.0
82	294.546	214.703	6.000	10.0	0.0	0.0
83	335.137	214.737	6.000	10.0	0.0	0.0
84	102.265	246.764	6.000	10.0	0.0	173.0
85	145.927	234.724	6.000	10.0	0.0	160.9
86	112.706	178.992	6.000	5.0	0.0	79.1

Exterior Scene 1 / Luminaires (coordinates list)

MICROPLUS GERMANY MPG-1N-40W

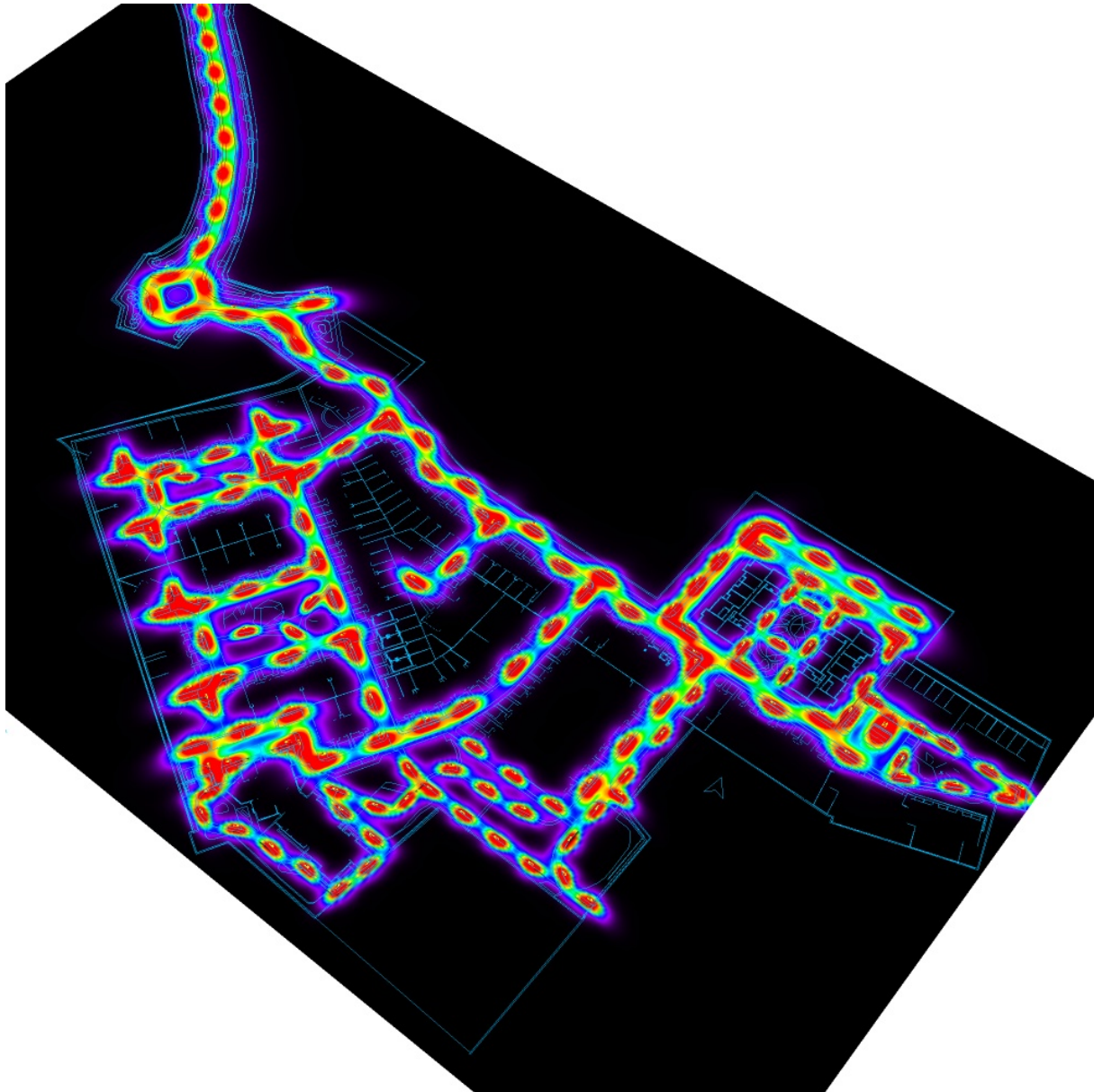
5914 lm, 44.0 W, 1 x 1 x MICROLED DE 150lm/W (Correction Factor 1.000).



No.	Position [m]			Rotation [°]		
	X	Y	Z	X	Y	Z
1	48.657	238.662	8.000	5.0	0.0	-14.5
2	30.159	244.295	8.000	5.0	0.0	0.0
3	33.117	269.139	8.000	5.0	0.0	-130.0
4	6.697	234.132	8.000	-5.0	0.0	27.0
5	-20.900	239.122	8.000	-0.5	5.0	145.3
6	-14.011	217.109	8.000	5.0	0.0	65.0
7	-37.004	210.904	8.000	5.0	0.0	-35.0
8	-43.698	232.755	8.000	5.0	0.0	-125.0
9	-46.009	259.449	8.000	10.0	0.0	-75.8
10	-61.053	285.479	8.000	10.0	0.0	-57.4
11	-79.210	309.251	8.000	10.0	0.0	-51.6
12	-99.730	331.152	8.000	10.0	0.0	-39.5
13	-122.594	350.457	8.000	10.0	0.0	-39.5
14	-145.917	369.173	8.000	10.0	0.0	-38.0
15	-169.969	387.104	8.000	10.0	0.0	-38.0
16	-193.373	405.614	8.000	10.0	0.0	-40.0



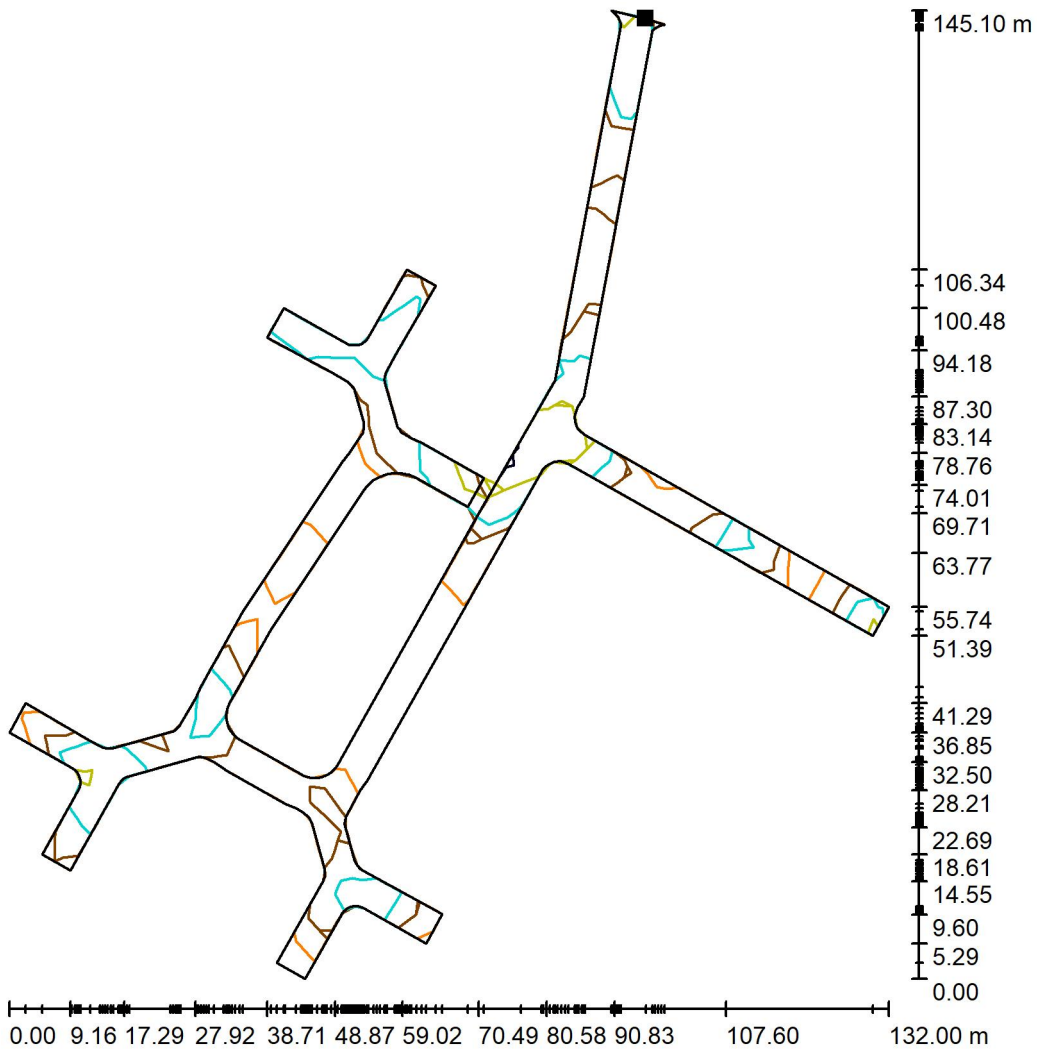
Exterior Scene 1 / False Colour Rendering



0 1.88 3.75 5.63 7.50 9.38 11.25 13.13 15 lx

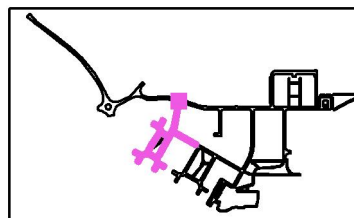


Exterior Scene 1 / Road A / Surface 1 / Isolines (E)



Values in Lux, Scale 1 : 1135

Position of surface in external scene:
 Marked point:
 (120.531 m, 235.497 m, 0.000 m)

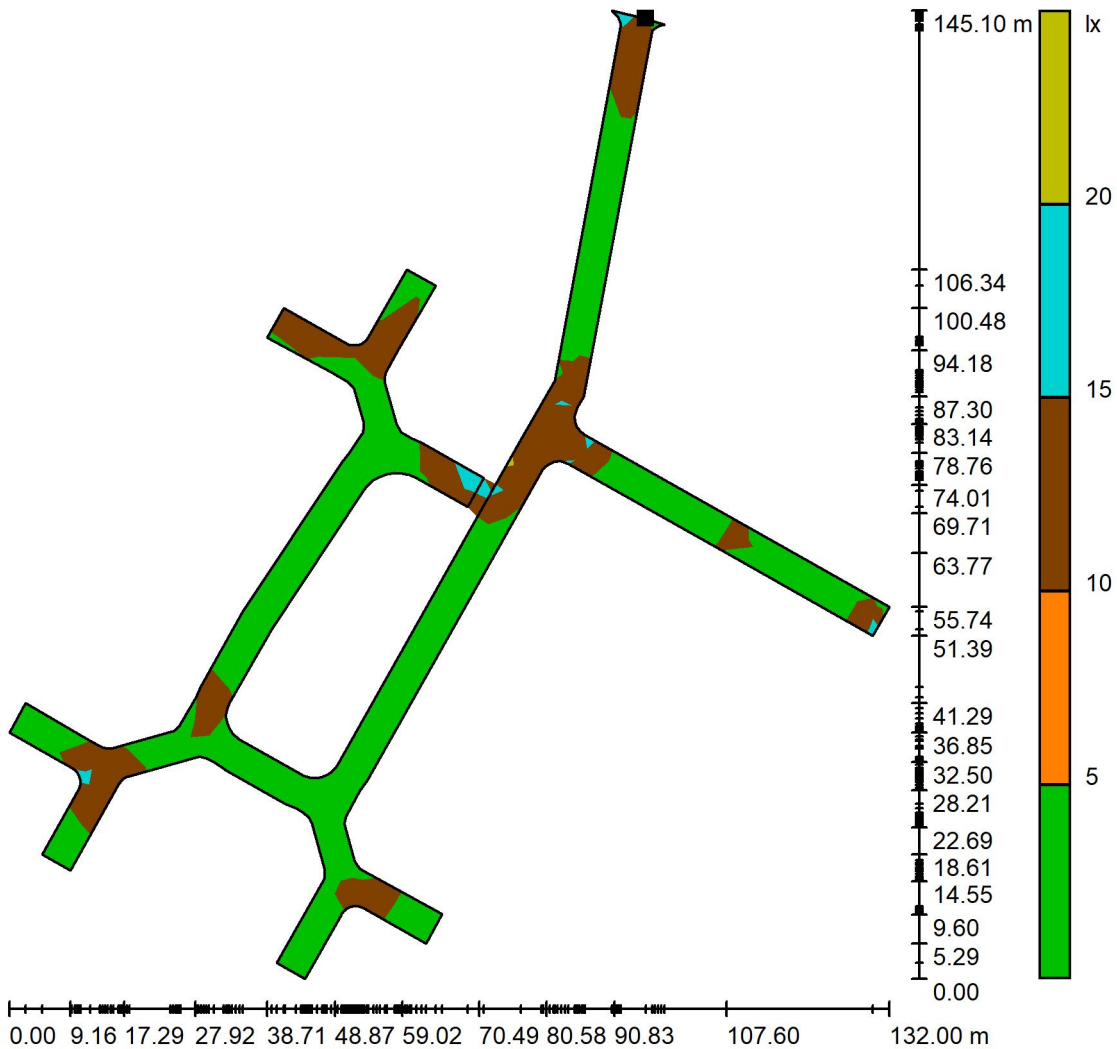


Grid: 25 x 15 Points

E_{av} [lx]	E_{min} [lx]	E_{max} [lx]	u0	E_{min} / E_{max}
14	3.26	28	0.239	0.117

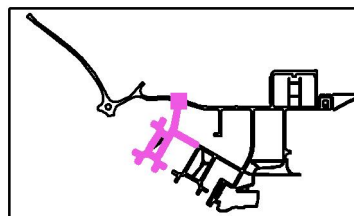


Exterior Scene 1 / Road A / Surface 1 / Greyscale (E)



Scale 1 : 1135

Position of surface in external scene:
 Marked point:
 (120.531 m, 235.497 m, 0.000 m)

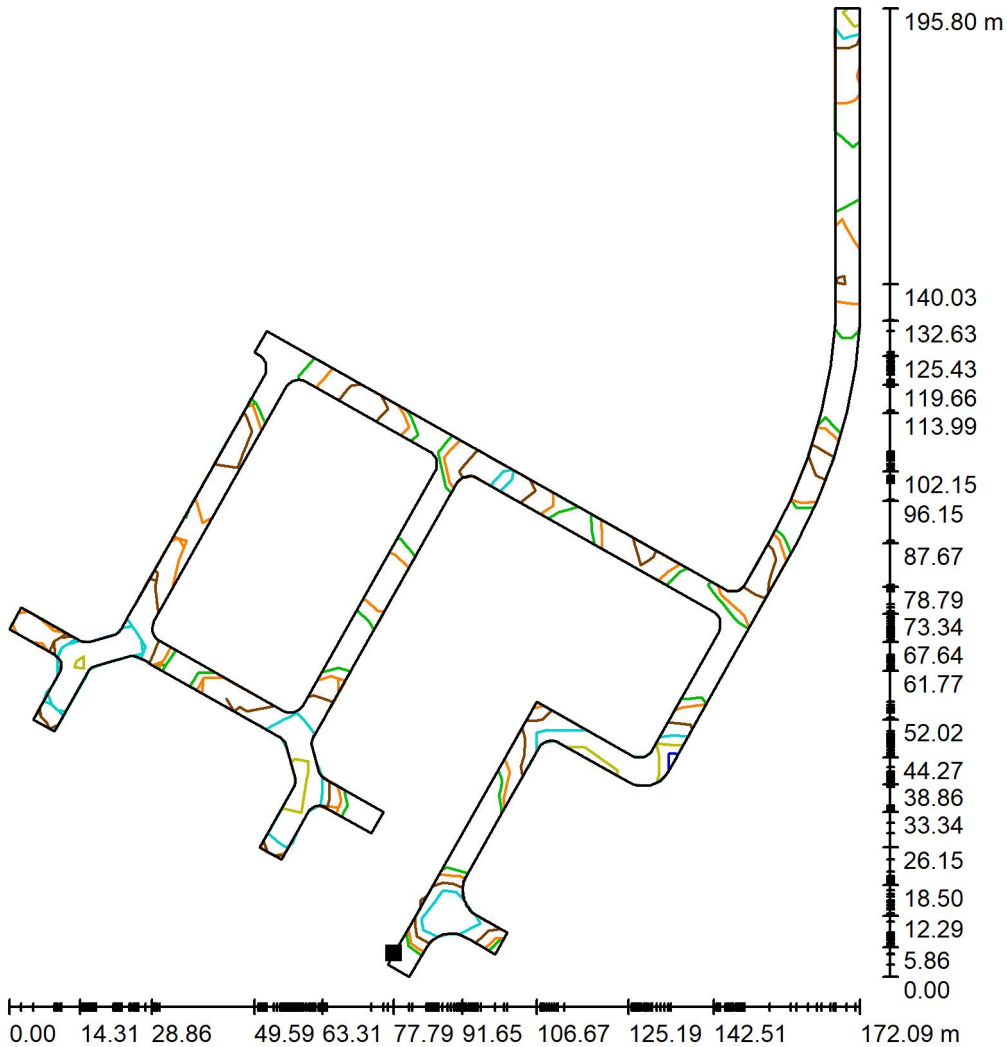


Grid: 25 x 15 Points

E_{av} [lx]	E_{min} [lx]	E_{max} [lx]	u0	E_{min} / E_{max}
14	3.26	28	0.239	0.117

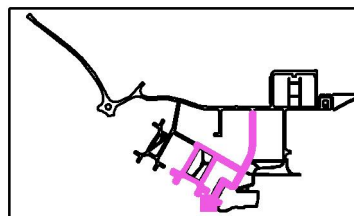


Exterior Scene 1 / Road B / Surface 1 / Isolines (E)



Values in Lux, Scale 1 : 1531

Position of surface in external scene:
 Marked point:
 (182.776 m, 21.437 m, 0.000 m)



Grid: 30 x 15 Points

E_{av} [lx]
13

E_{min} [lx]
2.56

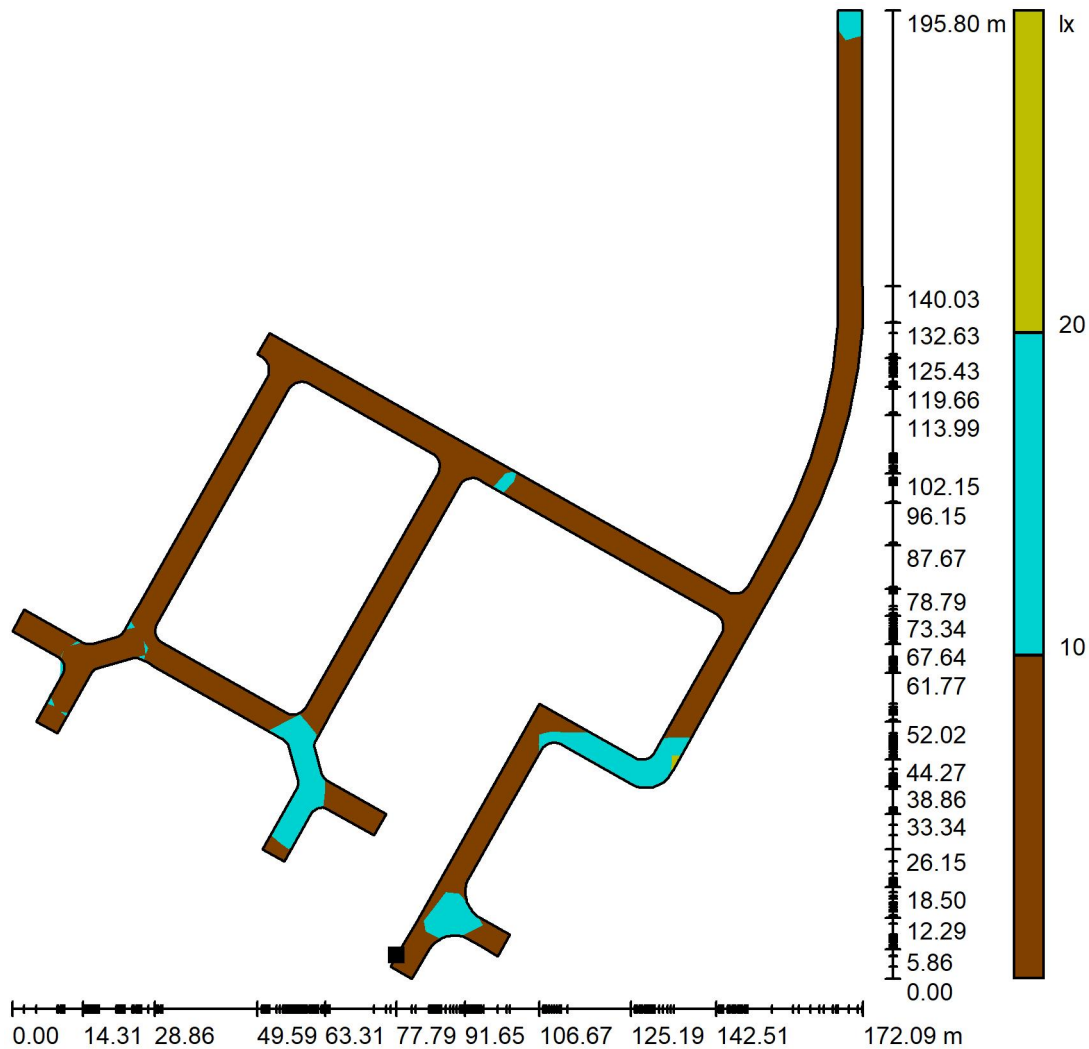
E_{max} [lx]
29

u0
0.196

E_{min} / E_{max}
0.087

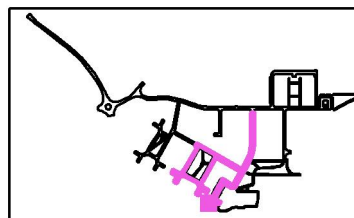


Exterior Scene 1 / Road B / Surface 1 / Greyscale (E)



Scale 1 : 1531

Position of surface in external scene:
Marked point:
(182.776 m, 21.437 m, 0.000 m)

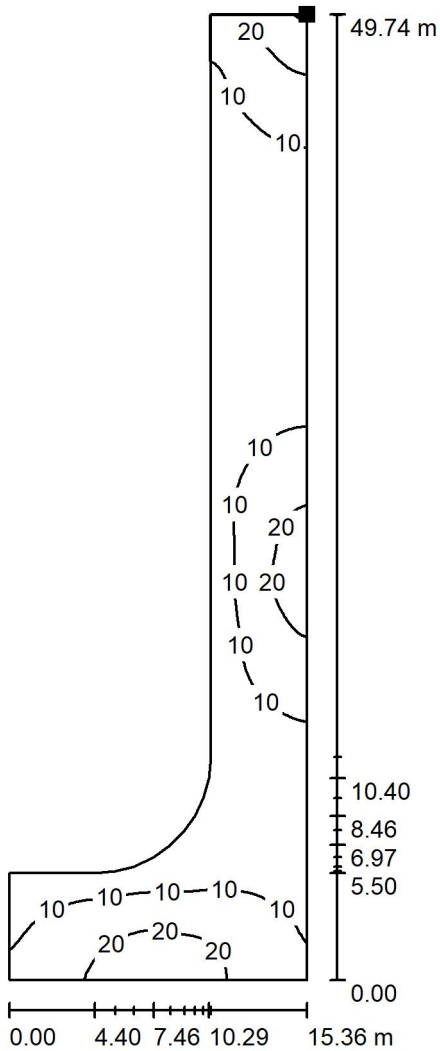


Grid: 30 x 15 Points

E_{av} [lx]	E_{min} [lx]	E_{max} [lx]	u0	E_{min} / E_{max}
13	2.56	29	0.196	0.087

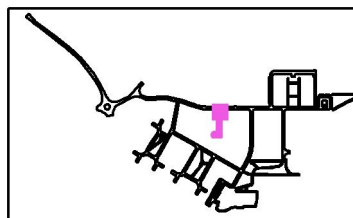


Exterior Scene 1 / Road C / Surface 1 / Isolines (E)



Values in Lux, Scale 1 : 390

Position of surface in external scene:
Marked point:
(209.189 m, 212.494 m, 0.000 m)

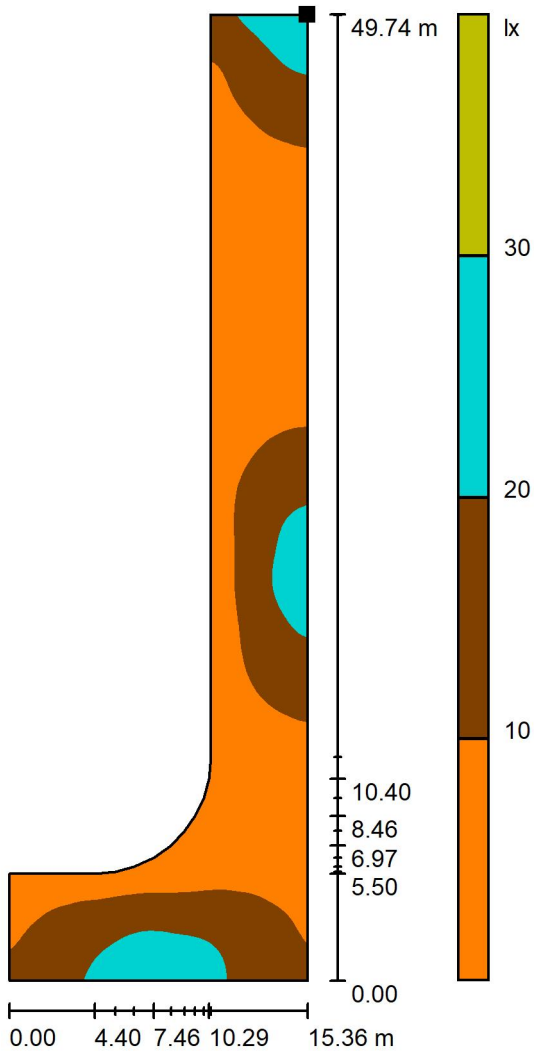


Grid: 64 x 128 Points

E_{av} [lx]	E_{min} [lx]	E_{max} [lx]	u0	E_{min} / E_{max}
11	3.32	31	0.315	0.109

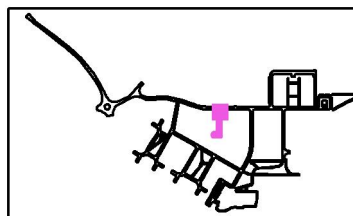


Exterior Scene 1 / Road C / Surface 1 / Greyscale (E)



Scale 1 : 390

Position of surface in external scene:
 Marked point:
 (209.189 m, 212.494 m, 0.000 m)

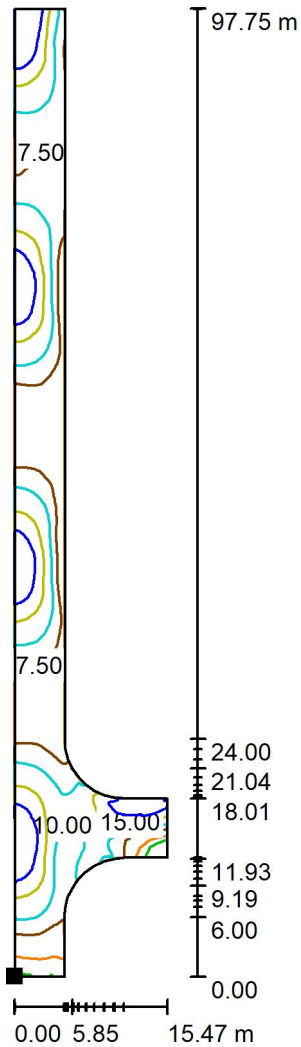


Grid: 64 x 128 Points

E_{av} [lx]	E_{min} [lx]	E_{max} [lx]	u0	E_{min} / E_{max}
11	3.32	31	0.315	0.109

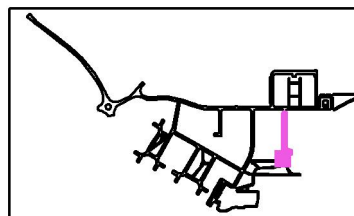


Exterior Scene 1 / Road D / Surface 1 / Isolines (E)



Values in Lux, Scale 1 : 765

Position of surface in external scene:
Marked point:
(339.142 m, 114.857 m, 0.000 m)

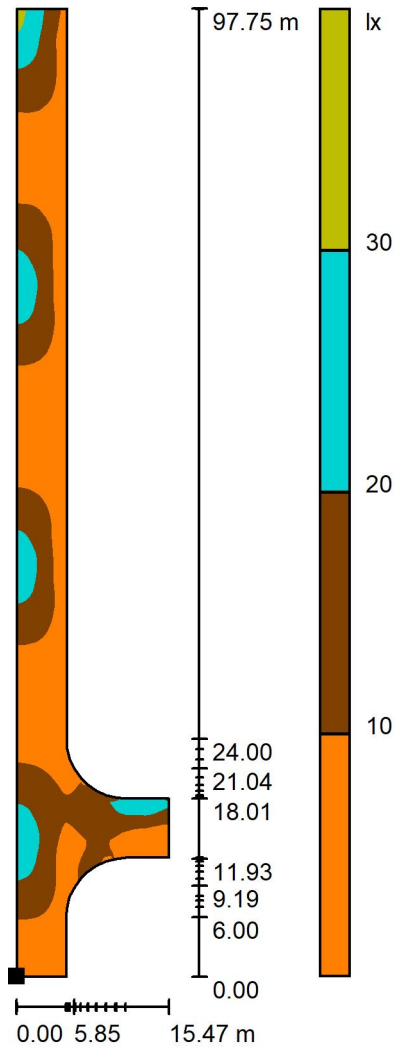


Grid: 128 x 64 Points

E_{av} [lx]	E_{min} [lx]	E_{max} [lx]	u0	E_{min} / E_{max}
12	2.55	33	0.222	0.077

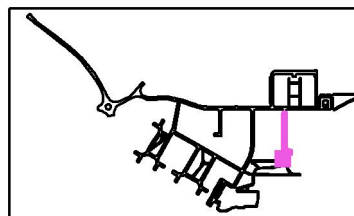


Exterior Scene 1 / Road D / Surface 1 / Greyscale (E)



Scale 1 : 765

Position of surface in external scene:
Marked point:
(339.142 m, 114.857 m, 0.000 m)



Grid: 128 x 64 Points

E_{av} [lx]
12

E_{min} [lx]
2.55

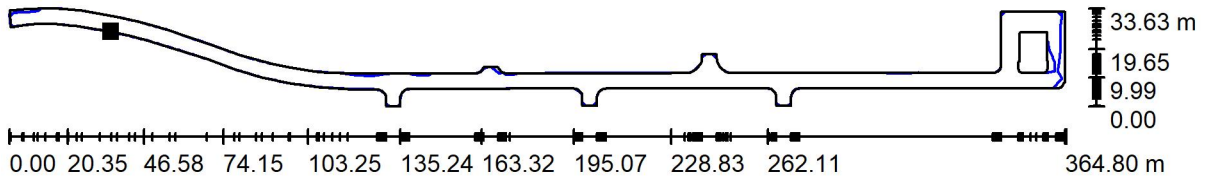
E_{max} [lx]
33

u_0
0.222

E_{min} / E_{max}
0.077

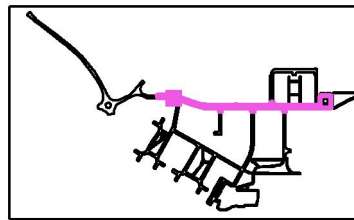


Exterior Scene 1 / Road E / Surface 1 / Isolines (E)



Values in Lux, Scale 1 : 2608

Position of surface in external scene:
 Marked point:
 (109.229 m, 238.115 m, 0.000 m)

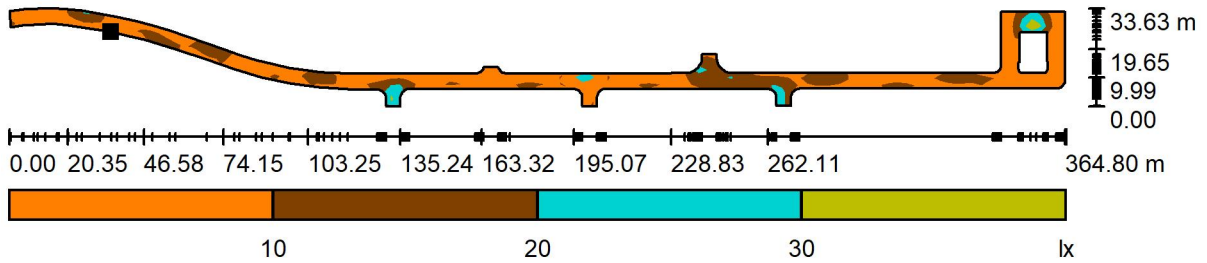


Grid: 127 x 13 Points

E_{av} [lx]	E_{min} [lx]	E_{max} [lx]	u0	E_{min} / E_{max}
11	2.61	49	0.232	0.053

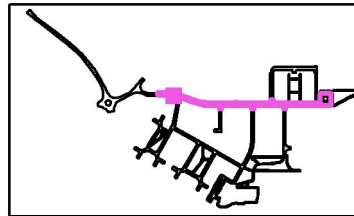


Exterior Scene 1 / Road E / Surface 1 / Greyscale (E)



Scale 1 : 2608

Position of surface in external scene:
 Marked point:
 (109.229 m, 238.115 m, 0.000 m)

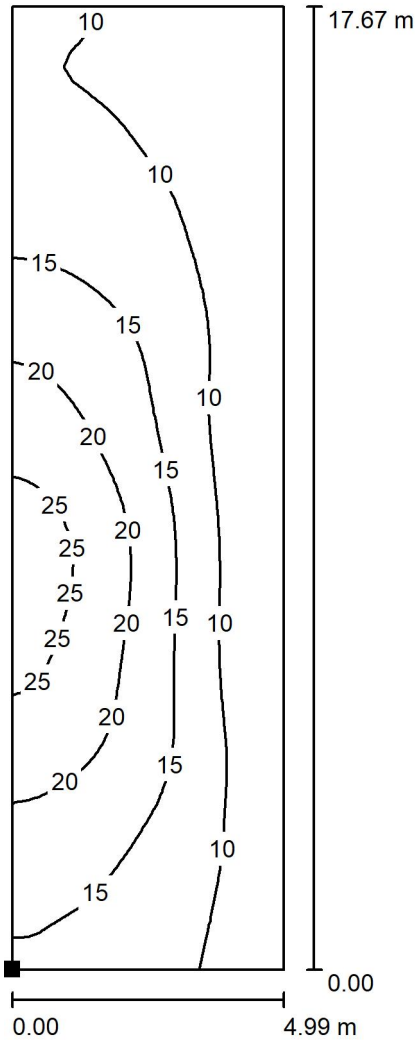


Grid: 127 x 13 Points

E_{av} [lx]	E_{min} [lx]	E_{max} [lx]	u0	E_{min} / E_{max}
11	2.61	49	0.232	0.053

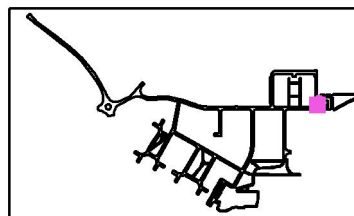


Exterior Scene 1 / Carpark / Surface 1 / Isolines (E)



Values in Lux, Scale 1 : 139

Position of surface in external scene:
Marked point:
(411.758 m, 227.313 m, 0.000 m)



Grid: 32 x 64 Points

E_{av} [lx]
14

E_{min} [lx]
5.39

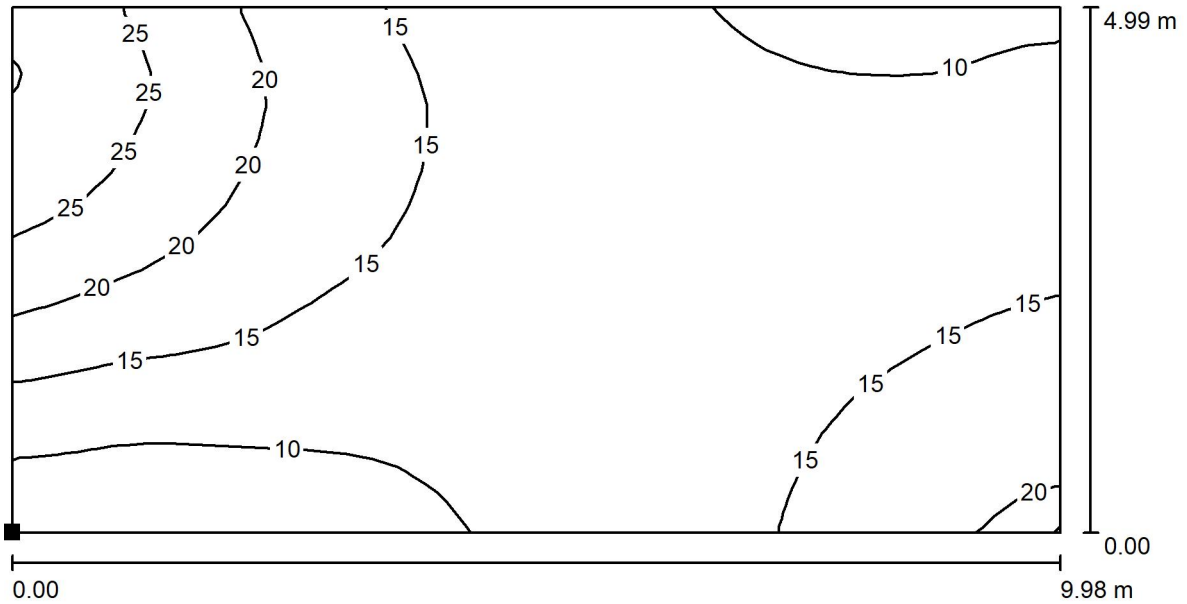
E_{max} [lx]
28

$u0$
0.398

E_{min} / E_{max}
0.192

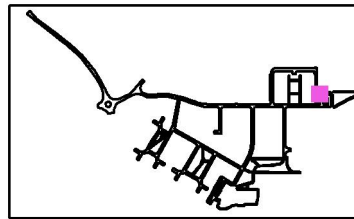


Exterior Scene 1 / Carpark / Surface 1 / Isolines (E)



Values in Lux, Scale 1 : 72

Position of surface in external scene:
 Marked point:
 (416.778 m, 244.984 m, 0.000 m)

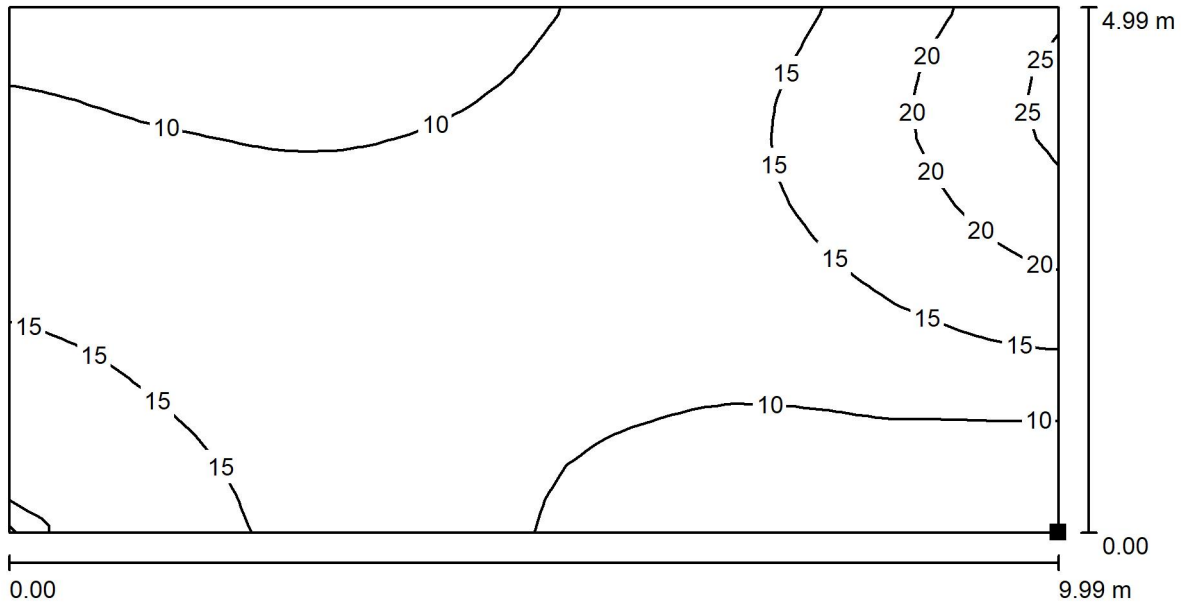


Grid: 32 x 16 Points

E_{av} [lx]	E_{min} [lx]	E_{max} [lx]	u0	E_{min} / E_{max}
14	7.34	30	0.507	0.241

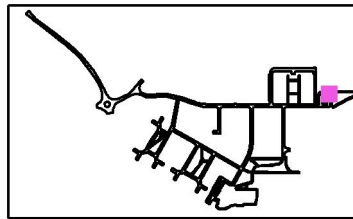


Exterior Scene 1 / Carpark / Surface 1 / Isolines (E)



Values in Lux, Scale 1 : 72

Position of surface in external scene:
 Marked point:
 (438.744 m, 244.984 m, 0.000 m)

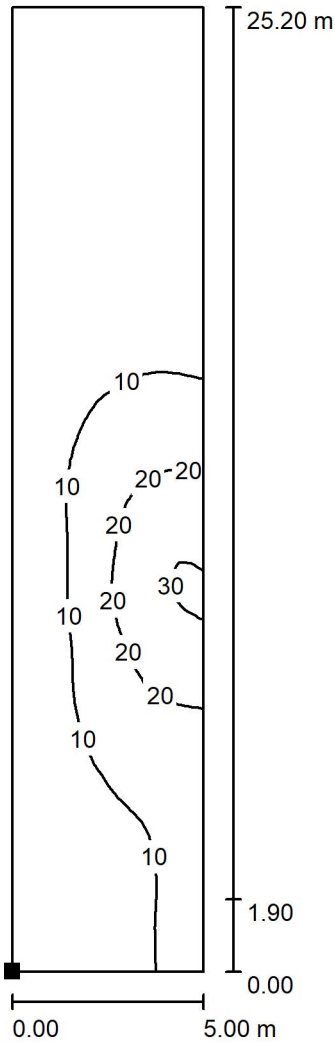


Grid: 16 x 32 Points

E_{av} [lx]	E_{min} [lx]	E_{max} [lx]	u0	E_{min} / E_{max}
13	5.80	26	0.459	0.221

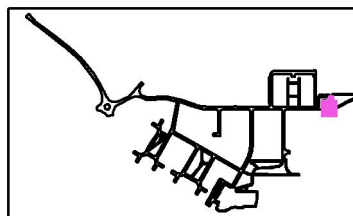


Exterior Scene 1 / Carpark / Surface 1 / Isolines (E)



Values in Lux, Scale 1 : 198

Position of surface in external scene:
Marked point:
(438.746 m, 219.787 m, 0.000 m)



Grid: 16 x 64 Points

E_{av} [lx]
9.17

E_{min} [lx]
2.31

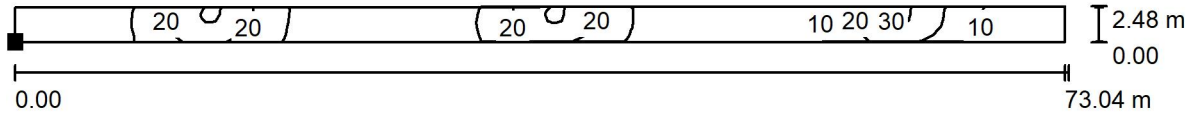
E_{max} [lx]
32

u0
0.251

E_{min} / E_{max}
0.073

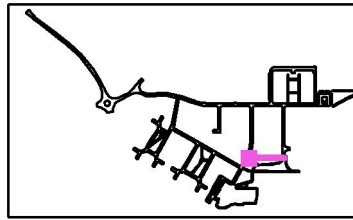


Exterior Scene 1 / Connecting footpath / Surface 1 / Isolines (E)



Values in Lux, Scale 1 : 523

Position of surface in external scene:
Marked point:
(270.163 m, 109.066 m, 0.000 m)

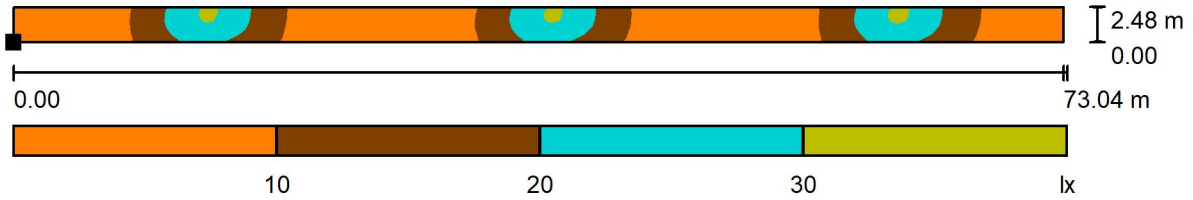


Grid: 127 x 5 Points

E_{av} [lx]	E_{min} [lx]	E_{max} [lx]	u0	E_{min} / E_{max}
11	2.07	32	0.181	0.065

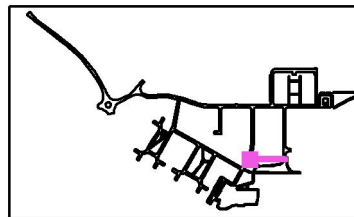


Exterior Scene 1 / Connecting footpath / Surface 1 / Greyscale (E)



Scale 1 : 523

Position of surface in external scene:
Marked point:
(270.163 m, 109.066 m, 0.000 m)

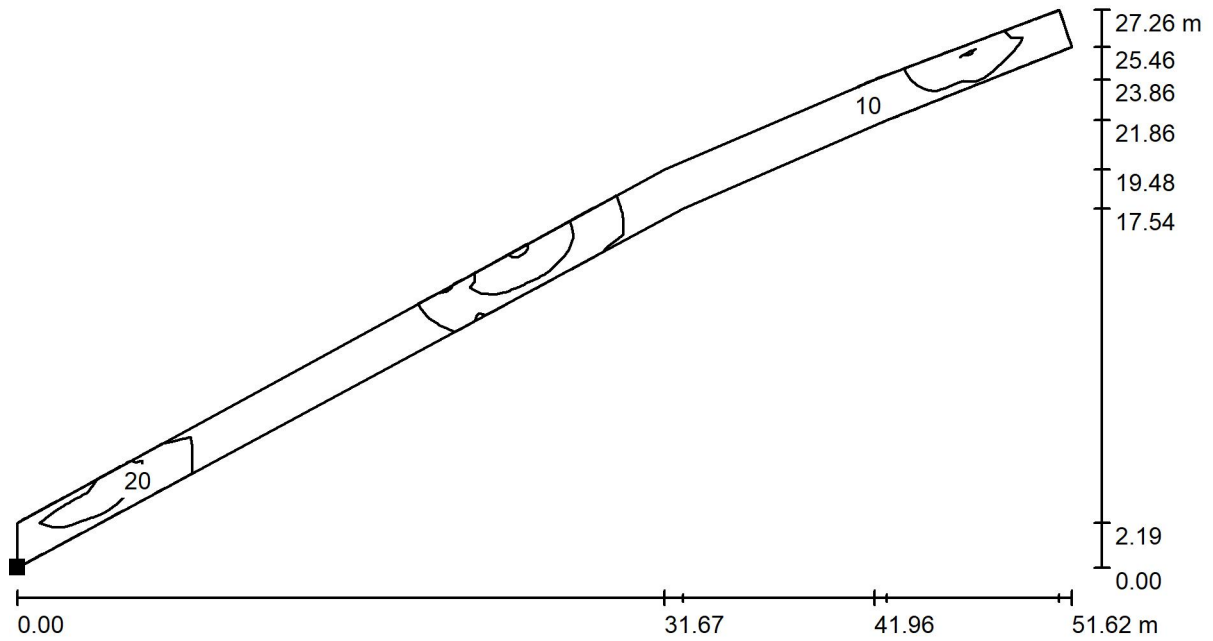


Grid: 127 x 5 Points

E_{av} [lx]	E_{min} [lx]	E_{max} [lx]	u0	E_{min} / E_{max}
11	2.07	32	0.181	0.065

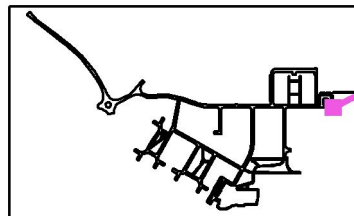


Exterior Scene 1 / Connecting footpath / Surface 1 / Isolines (E)



Values in Lux, Scale 1 : 370

Position of surface in external scene:
Marked point:
(445.154 m, 217.839 m, 0.000 m)

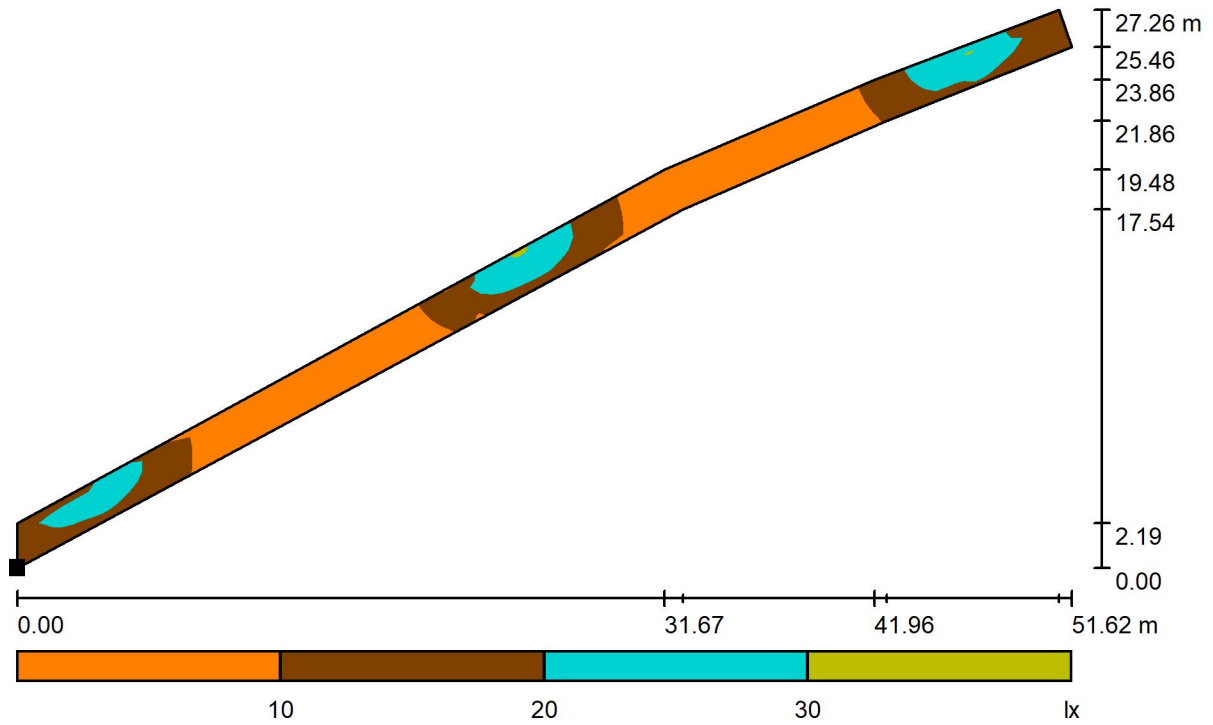


Grid: 121 x 7 Points

E_{av} [lx]	E_{min} [lx]	E_{max} [lx]	u0	E_{min} / E_{max}
12	2.25	32	0.186	0.070

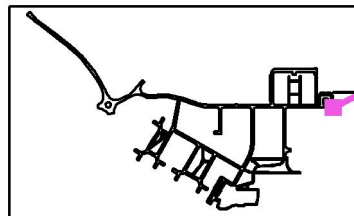


Exterior Scene 1 / Connecting footpath / Surface 1 / Greyscale (E)



Scale 1 : 370

Position of surface in external scene:
Marked point:
(445.154 m, 217.839 m, 0.000 m)

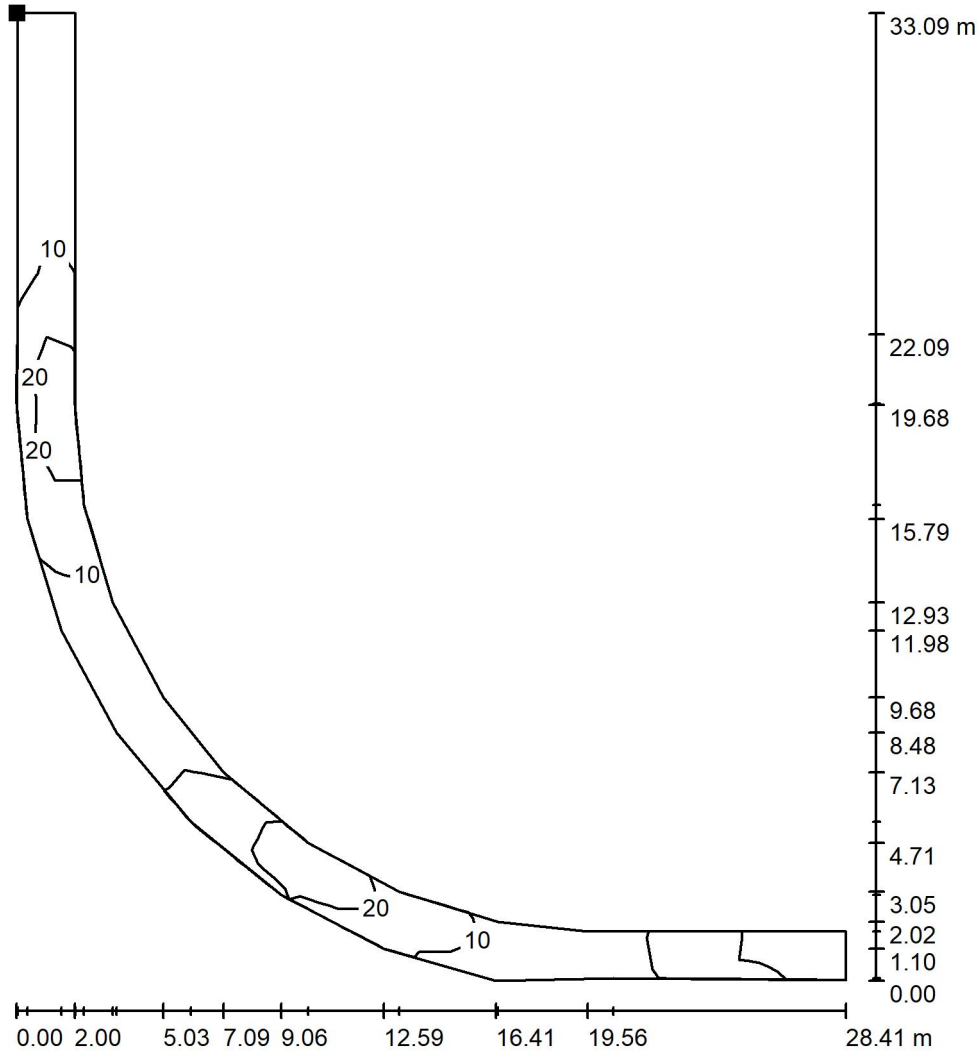


Grid: 121 x 7 Points

E_{av} [lx]	E_{min} [lx]	E_{max} [lx]	u0	E_{min} / E_{max}
12	2.25	32	0.186	0.070

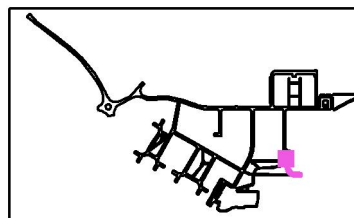


Exterior Scene 1 / Connecting footpath / Surface 1 / Isolines (E)



Values in Lux, Scale 1 : 259

Position of surface in external scene:
Marked point:
(346.144 m, 114.842 m, 0.000 m)

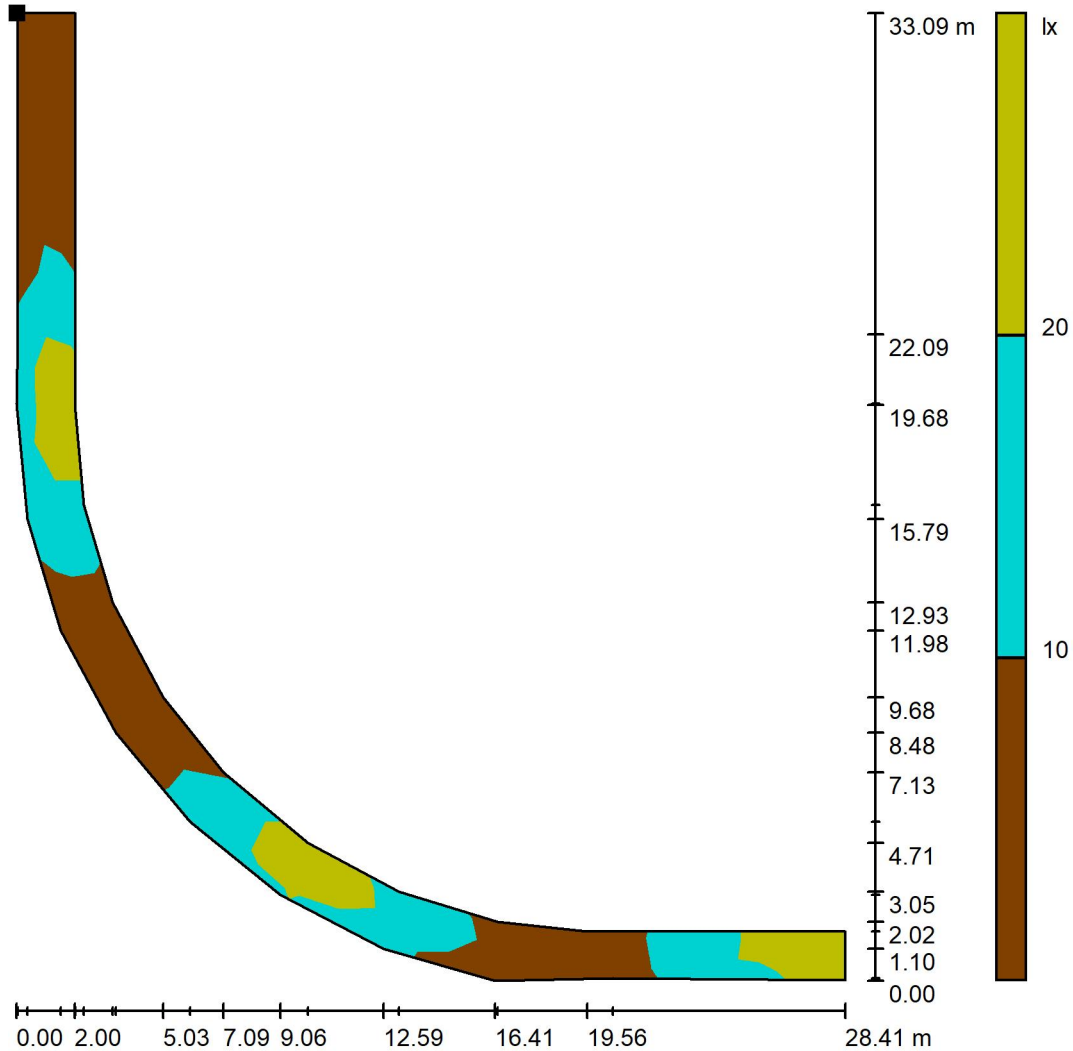


Grid: 30 x 15 Points

E_{av} [lx]	E_{min} [lx]	E_{max} [lx]	u0	E_{min} / E_{max}
14	4.51	30	0.320	0.149

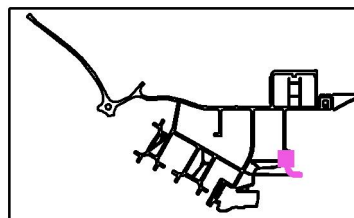


Exterior Scene 1 / Connecting footpath / Surface 1 / Greyscale (E)



Scale 1 : 259

Position of surface in external scene:
 Marked point:
 (346.144 m, 114.842 m, 0.000 m)

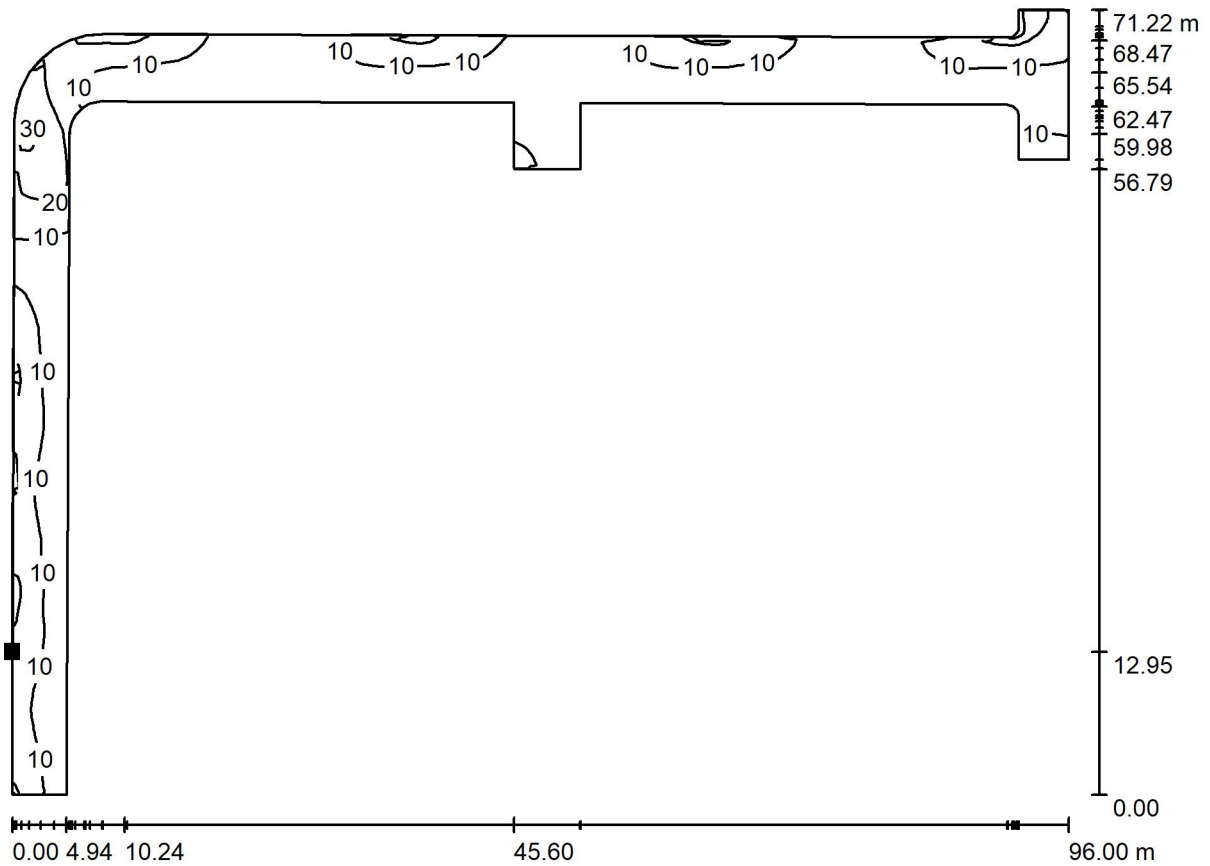


Grid: 30 x 15 Points

E_{av} [lx]	E_{min} [lx]	E_{max} [lx]	u0	E_{min} / E_{max}
14	4.51	30	0.320	0.149

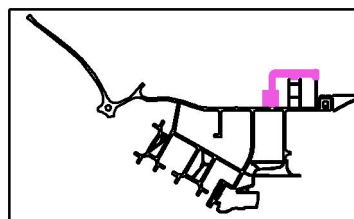


Exterior Scene 1 / Road D / Surface 1 / Isolines (E)



Values in Lux, Scale 1 : 687

Position of surface in external scene:
 Marked point:
 (313.404 m, 243.410 m, 0.000 m)

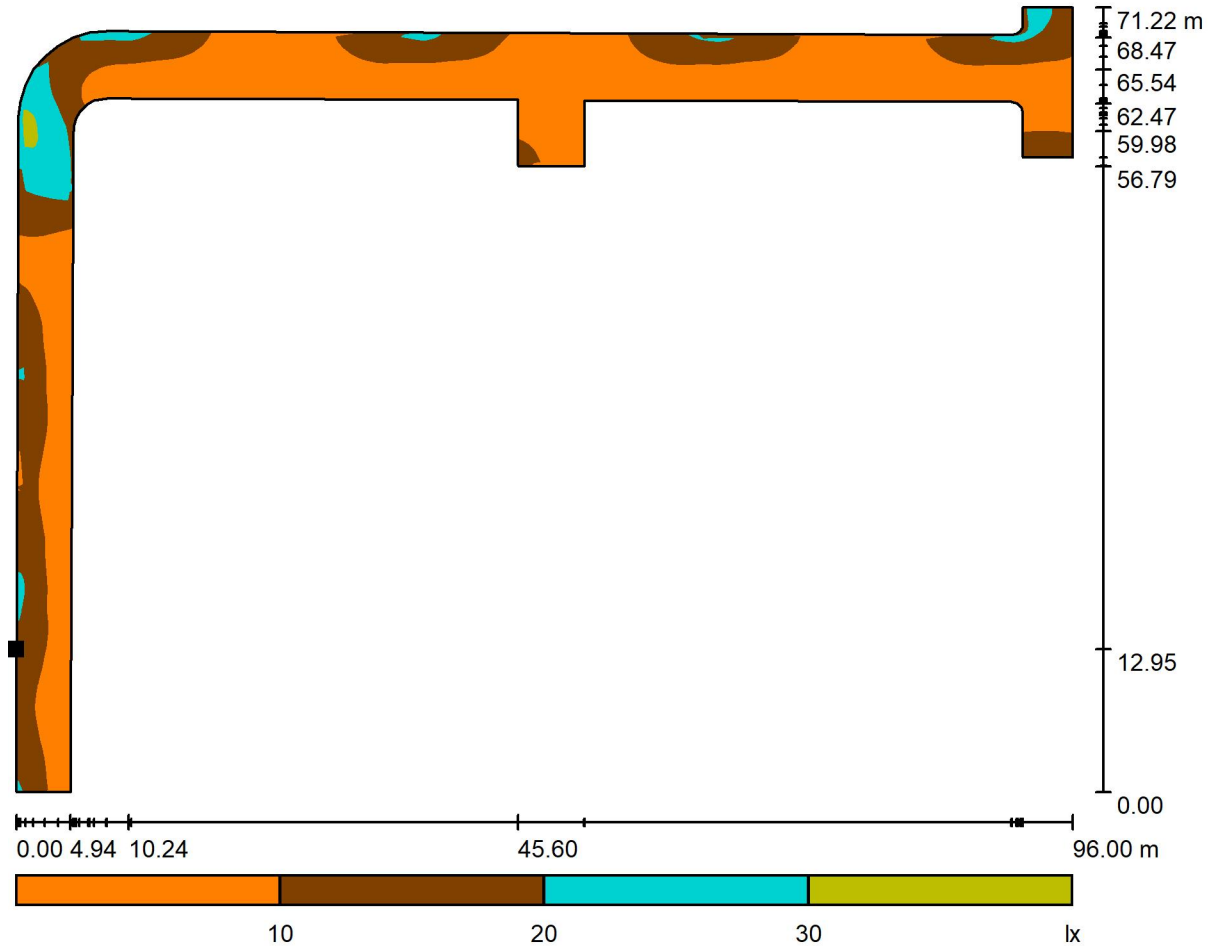


Grid: 128 x 128 Points

E_{av} [lx]	E_{min} [lx]	E_{max} [lx]	u0	E_{min} / E_{max}
10	3.93	32	0.391	0.121

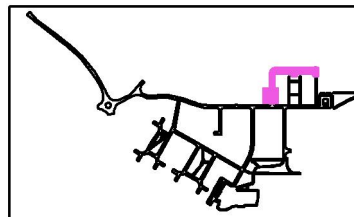


Exterior Scene 1 / Road D / Surface 1 / Greyscale (E)



Scale 1 : 687

Position of surface in external scene:
 Marked point:
 (313.404 m, 243.410 m, 0.000 m)

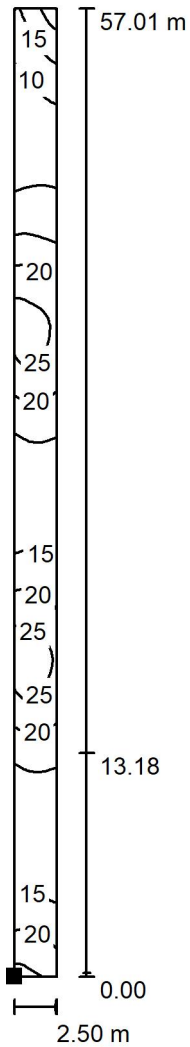


Grid: 128 x 128 Points

E_{av} [lx]	E_{min} [lx]	E_{max} [lx]	u_0	E_{min} / E_{max}
10	3.93	32	0.391	0.121

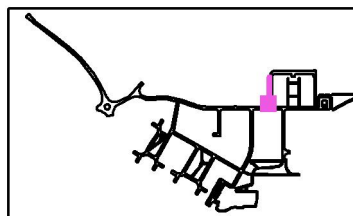


Exterior Scene 1 / Carpark / Surface 1 / Isolines (E)



Values in Lux, Scale 1 : 447

Position of surface in external scene:
Marked point:
(310.906 m, 230.227 m, 0.000 m)

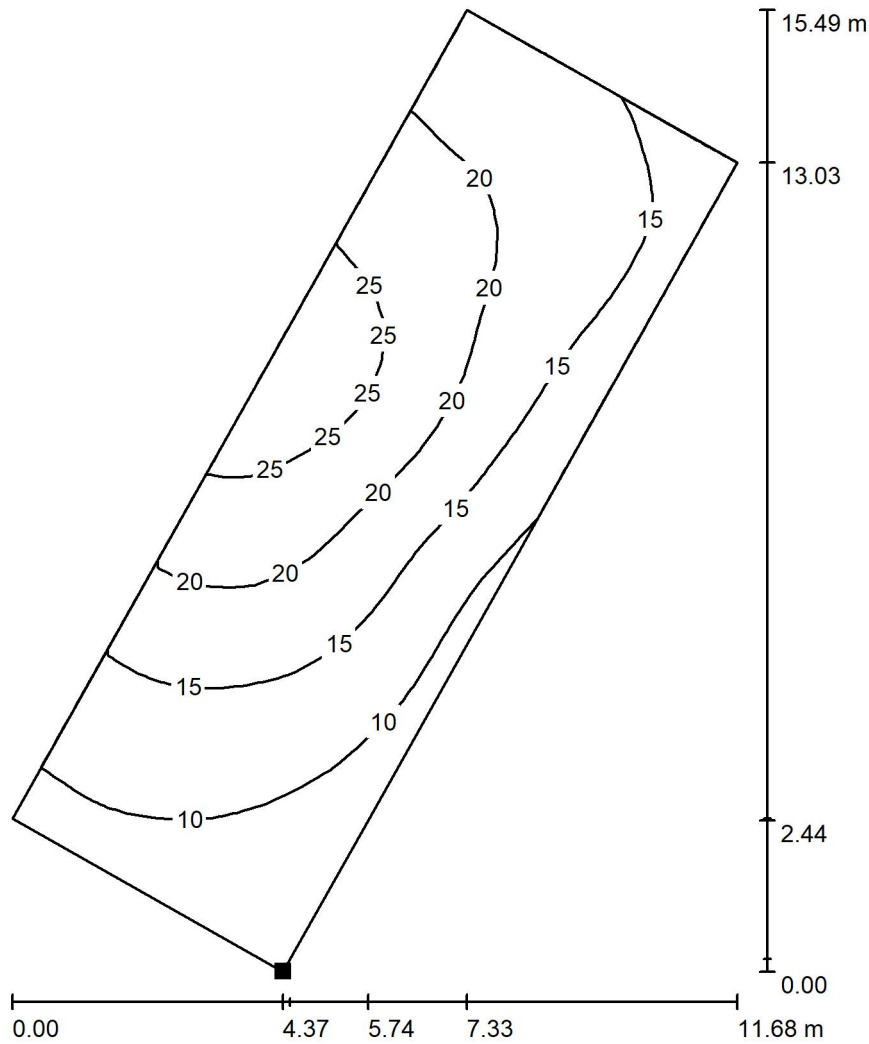


Grid: 8 x 128 Points

E_{av} [lx]	E_{min} [lx]	E_{max} [lx]	u0	E_{min} / E_{max}
17	7.18	29	0.424	0.249

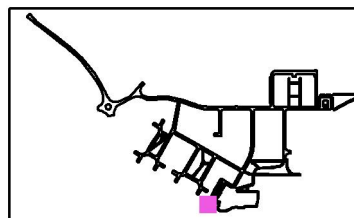


Exterior Scene 1 / Carpark / Surface 1 / Isolines (E)



Values in Lux, Scale 1 : 122

Position of surface in external scene:
 Marked point:
 (181.407 m, 19.000 m, 0.000 m)

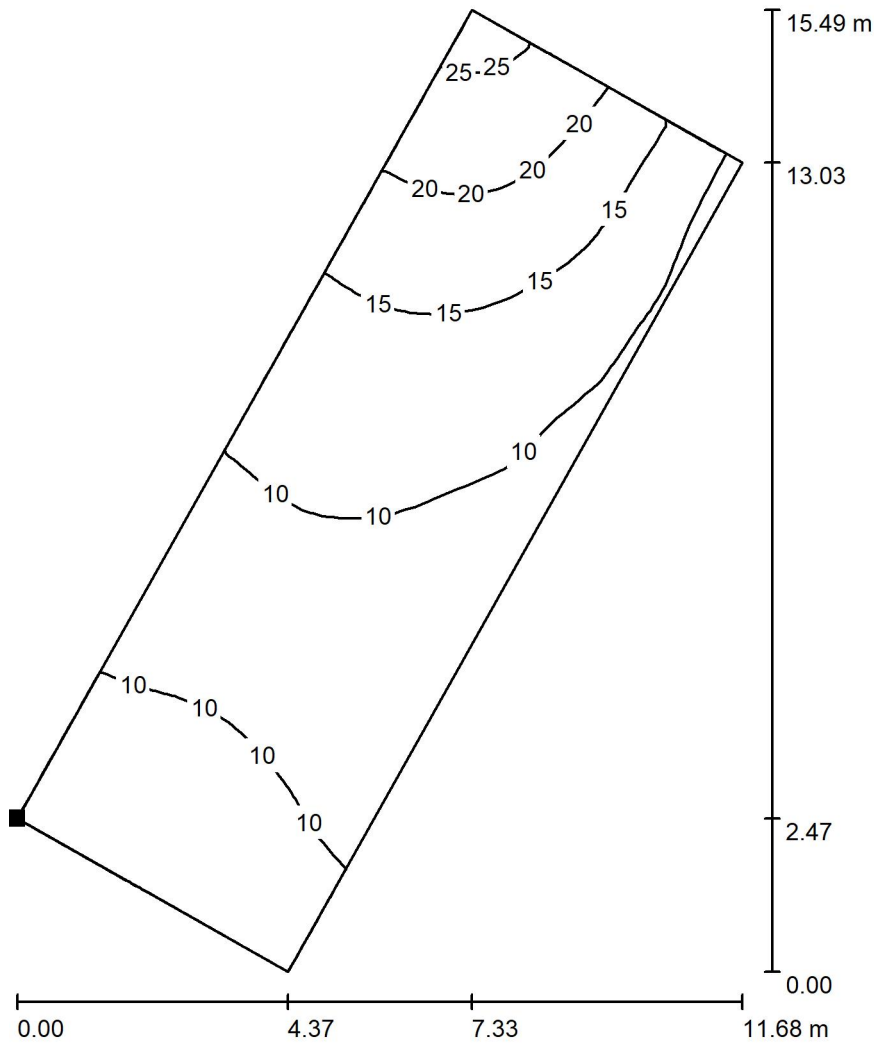


Grid: 32 x 16 Points

E_{av} [lx]	E_{min} [lx]	E_{max} [lx]	u0	E_{min} / E_{max}
16	6.11	28	0.374	0.216

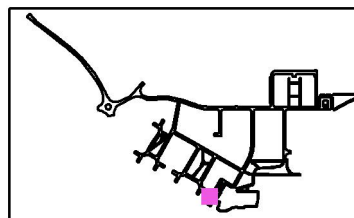


Exterior Scene 1 / Carpark / Surface 1 / Isolines (E)



Values in Lux, Scale 1 : 122

Position of surface in external scene:
 Marked point:
 (185.077 m, 35.743 m, 0.000 m)

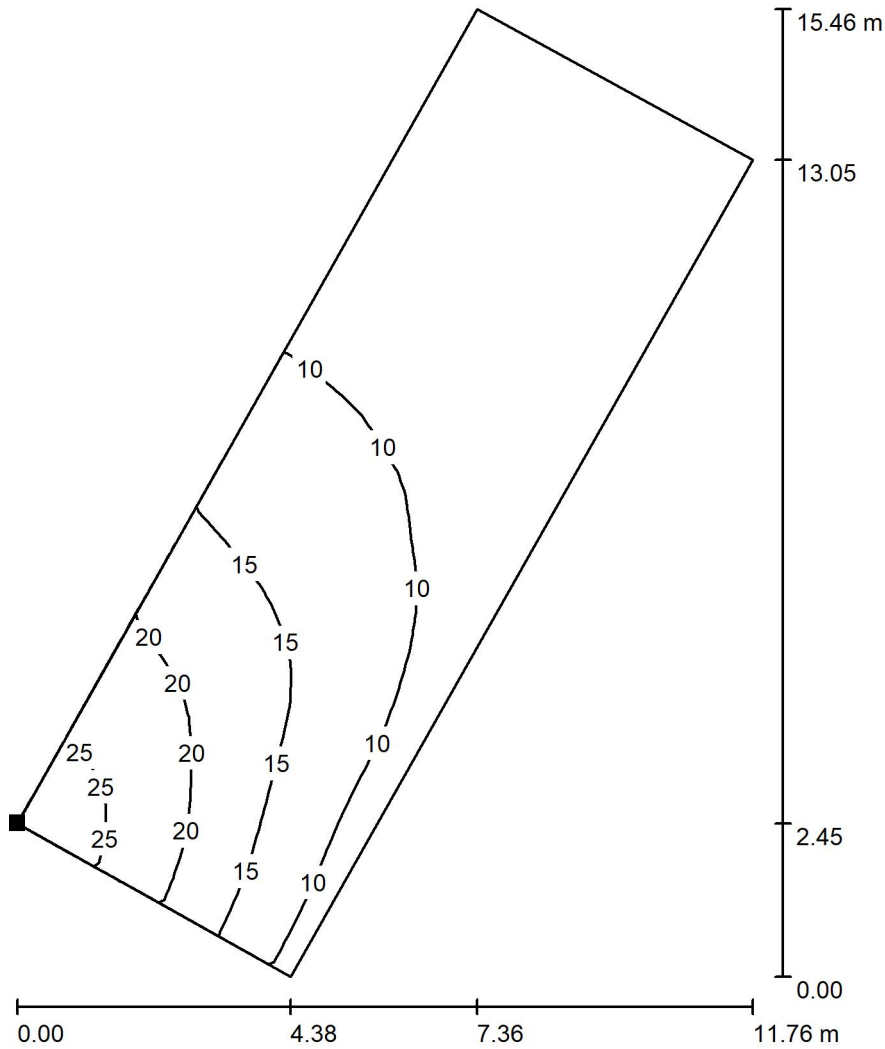


Grid: 32 x 16 Points

E_{av} [lx]	E_{min} [lx]	E_{max} [lx]	u0	E_{min} / E_{max}
12	7.87	27	0.632	0.296

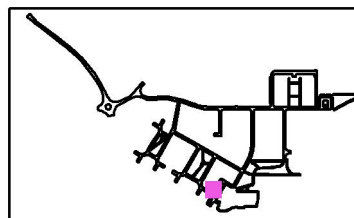


Exterior Scene 1 / Carpark / Surface 1 / Isolines (E)



Values in Lux, Scale 1 : 121

Position of surface in external scene:
 Marked point:
 (193.020 m, 49.766 m, 0.000 m)

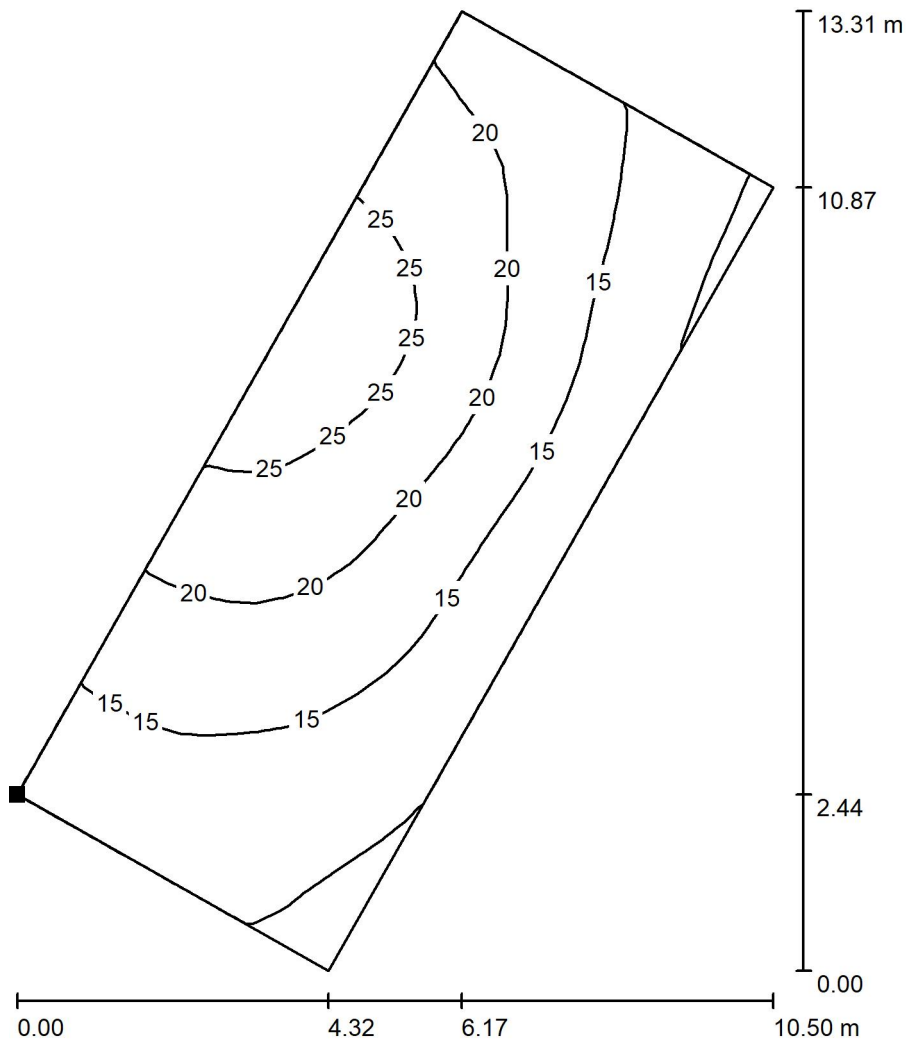


Grid: 32 x 16 Points

E_{av} [lx]	E_{min} [lx]	E_{max} [lx]	u0	E_{min} / E_{max}
12	6.84	27	0.579	0.249

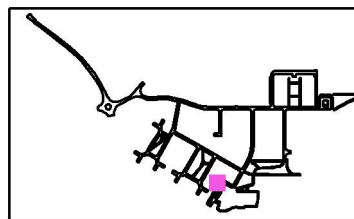


Exterior Scene 1 / Carpark / Surface 1 / Isolines (E)



Values in Lux, Scale 1 : 105

Position of surface in external scene:
 Marked point:
 (201.049 m, 63.895 m, 0.000 m)

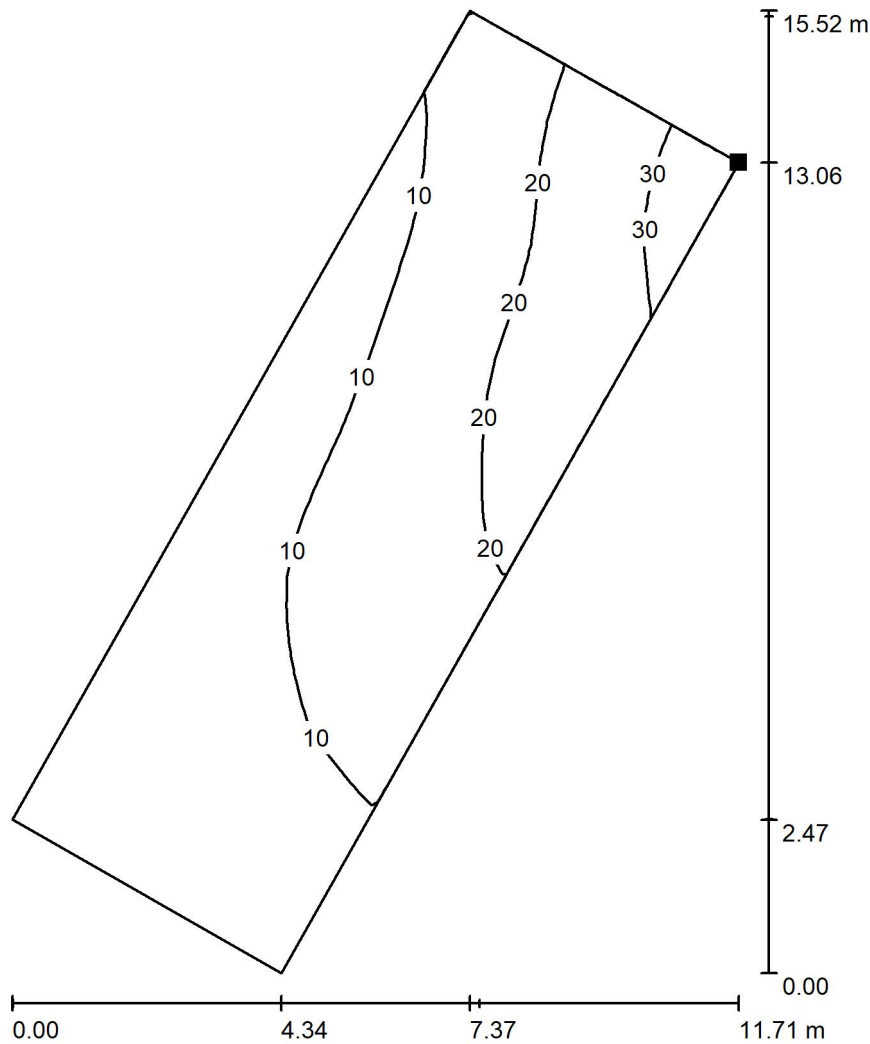


Grid: 32 x 16 Points

E_{av} [lx]	E_{min} [lx]	E_{max} [lx]	u0	E_{min} / E_{max}
17	8.65	29	0.503	0.302

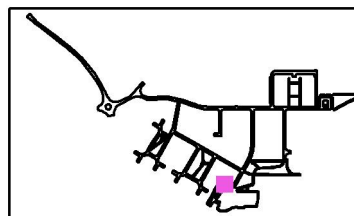


Exterior Scene 1 / Carpark / Surface 1 / Isolines (E)



Values in Lux, Scale 1 : 122

Position of surface in external scene:
 Marked point:
 (216.780 m, 61.254 m, 0.000 m)



Grid: 32 x 16 Points

E_{av} [lx]
14

E_{min} [lx]
4.92

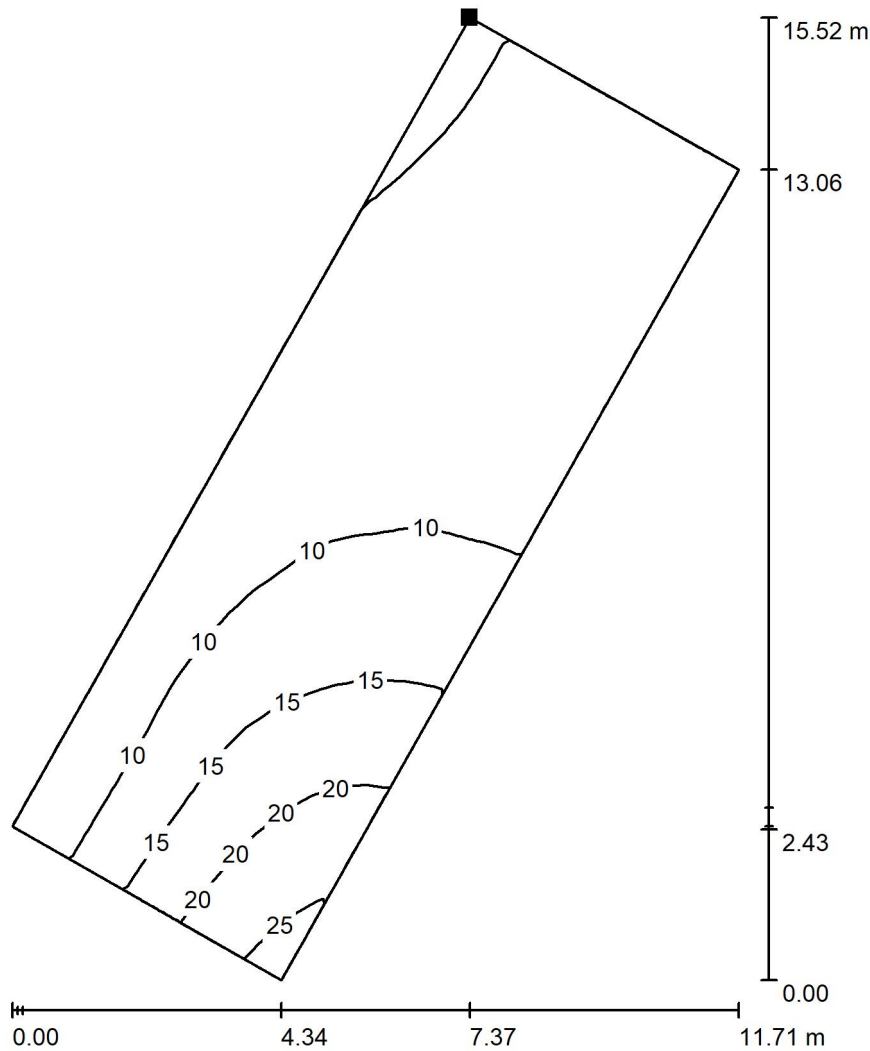
E_{max} [lx]
35

u0
0.361

E_{min} / E_{max}
0.140

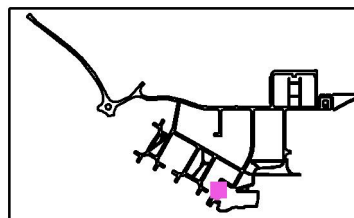


Exterior Scene 1 / Carpark / Surface 1 / Isolines (E)



Values in Lux, Scale 1 : 122

Position of surface in external scene:
Marked point:
(204.168 m, 48.943 m, 0.000 m)



Grid: 32 x 16 Points

E_{av} [lx]
9.87

E_{min} [lx]
4.73

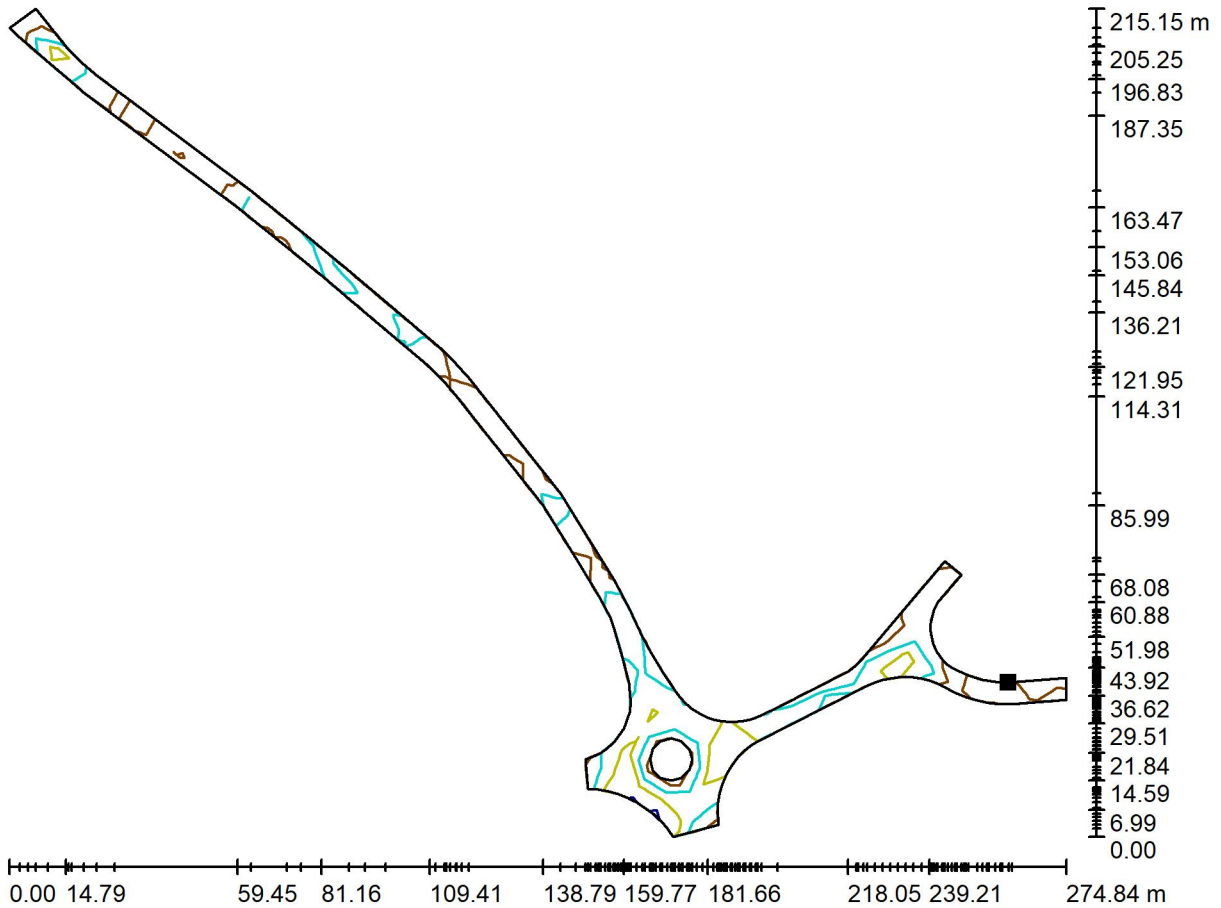
E_{max} [lx]
27

u_0
0.479

E_{min} / E_{max}
0.177

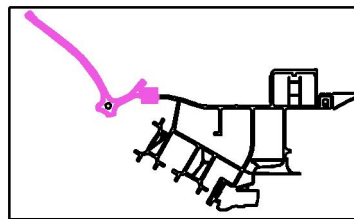


Exterior Scene 1 / Access Road / Surface 1 / Isolines (E)



Values in Lux, Scale 1 : 1965

Position of surface in external scene:
 Marked point:
 (58.817 m, 244.829 m, 0.000 m)

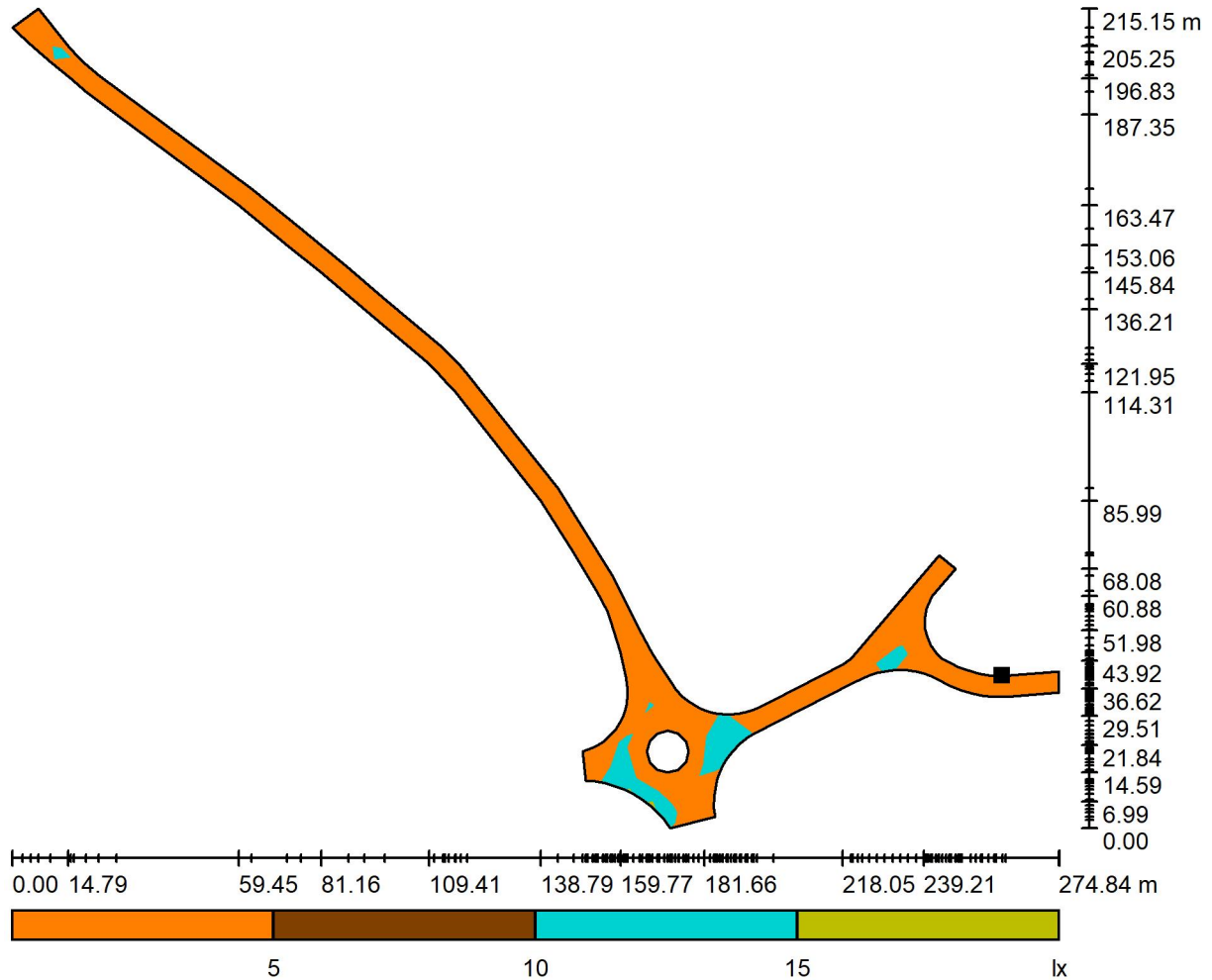


Grid: 47 x 15 Points

E_{av} [lx]	E_{min} [lx]	E_{max} [lx]	u0	E_{min} / E_{max}
10	3.48	20	0.344	0.175



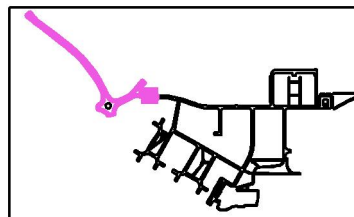
Exterior Scene 1 / Access Road / Surface 1 / Greyscale (E)



Scale 1 : 1965

Position of surface in external scene:

Marked point:
(58.817 m, 244.829 m, 0.000 m)



Grid: 47 x 15 Points

E_{av} [lx]
10

E_{min} [lx]
3.48

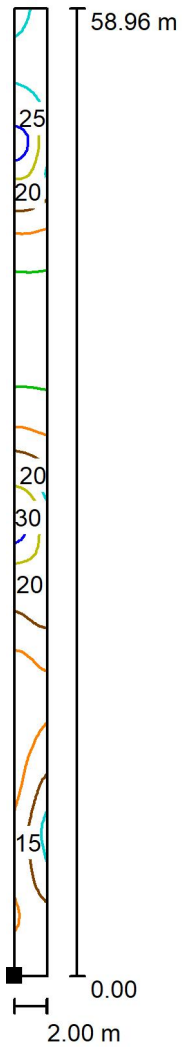
E_{max} [lx]
20

u_0
0.344

E_{min} / E_{max}
0.175

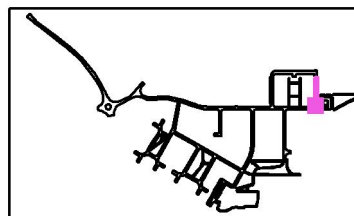


Exterior Scene 1 / Connecting Footpath / Surface 1 / Isolines (E)



Values in Lux, Scale 1 : 463

Position of surface in external scene:
Marked point:
(407.383 m, 226.115 m, 0.000 m)

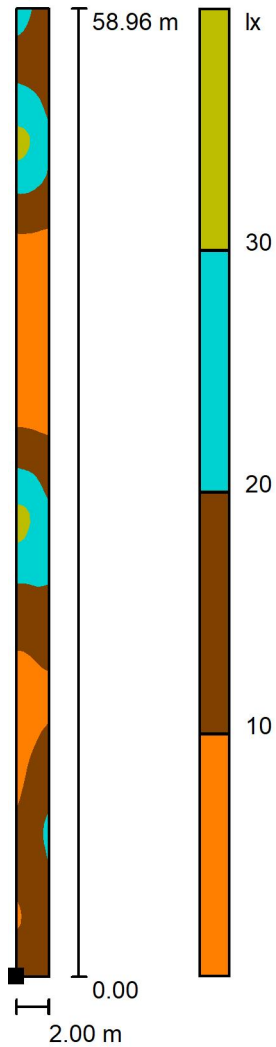


Grid: 8 x 128 Points

E_{av} [lx]	E_{min} [lx]	E_{max} [lx]	u0	E_{min} / E_{max}
14	2.84	33	0.198	0.086

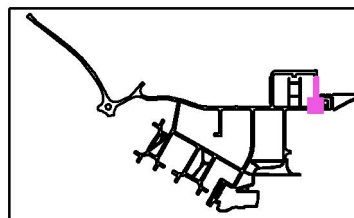


Exterior Scene 1 / Connecting Footpath / Surface 1 / Greyscale (E)



Scale 1 : 463

Position of surface in external scene:
Marked point:
(407.383 m, 226.115 m, 0.000 m)



Grid: 8 x 128 Points

E_{av} [lx]
14

E_{min} [lx]
2.84

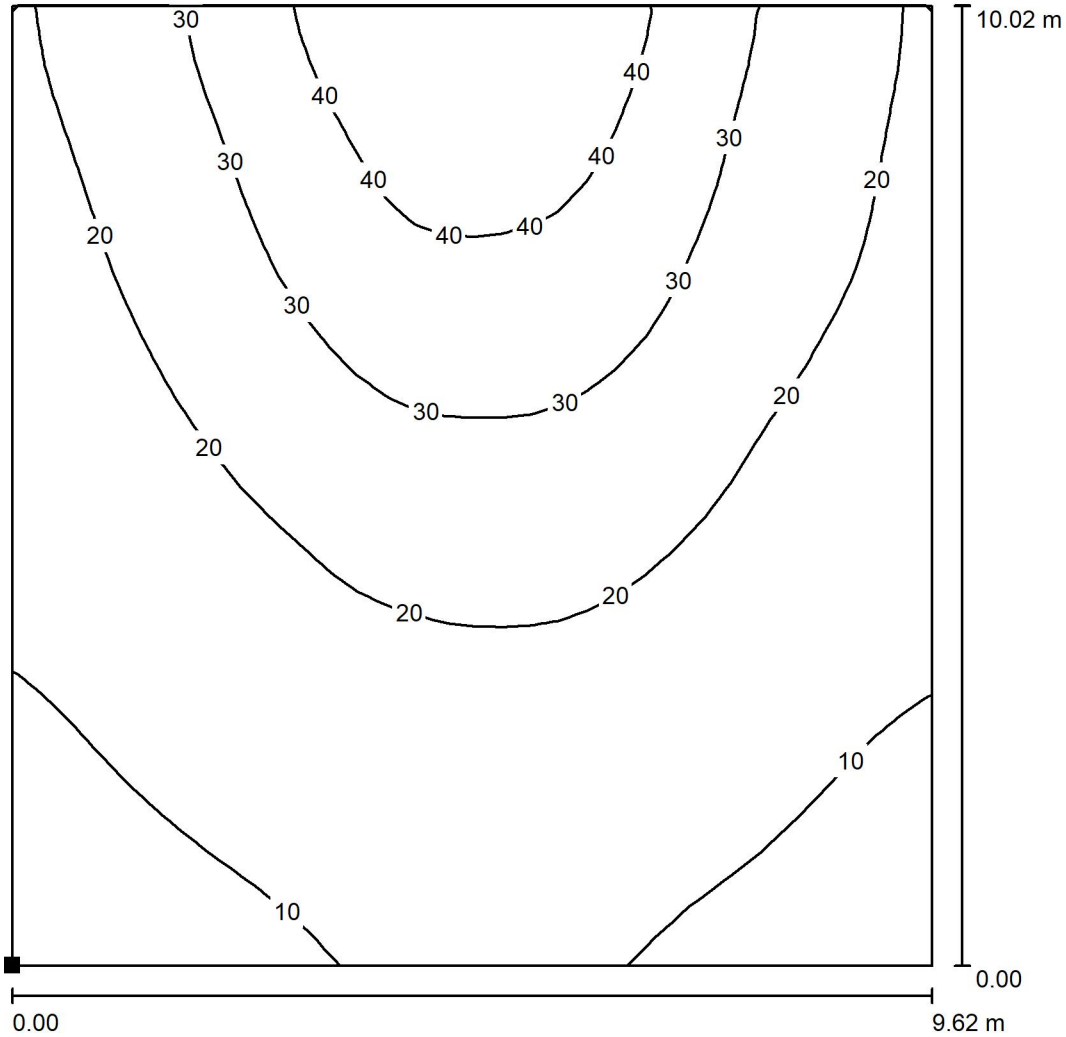
E_{max} [lx]
33

u0
0.198

E_{min} / E_{max}
0.086

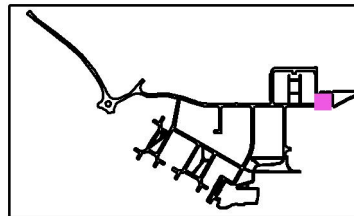


Exterior Scene 1 / Carpark / Surface 1 / Isolines (E)



Values in Lux, Scale 1 : 79

Position of surface in external scene:
 Marked point:
 (423.039 m, 227.842 m, 0.000 m)

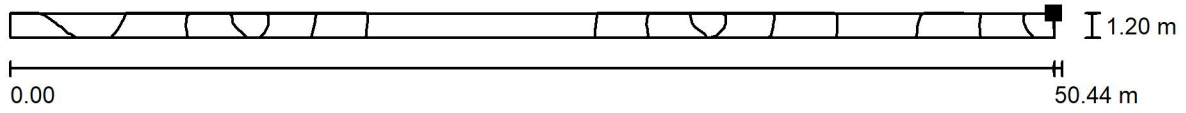


Grid: 32 x 32 Points

E_{av} [lx]	E_{min} [lx]	E_{max} [lx]	u0	E_{min} / E_{max}
21	7.18	50	0.340	0.144

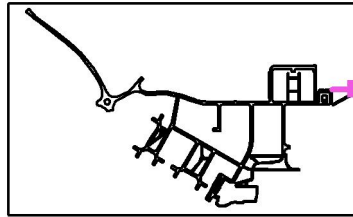


Exterior Scene 1 / Connecting Footpath / Surface 1 / Isolines (E)



Values in Lux, Scale 1 : 361

Position of surface in external scene:
Marked point:
(494.389 m, 250.951 m, 0.000 m)

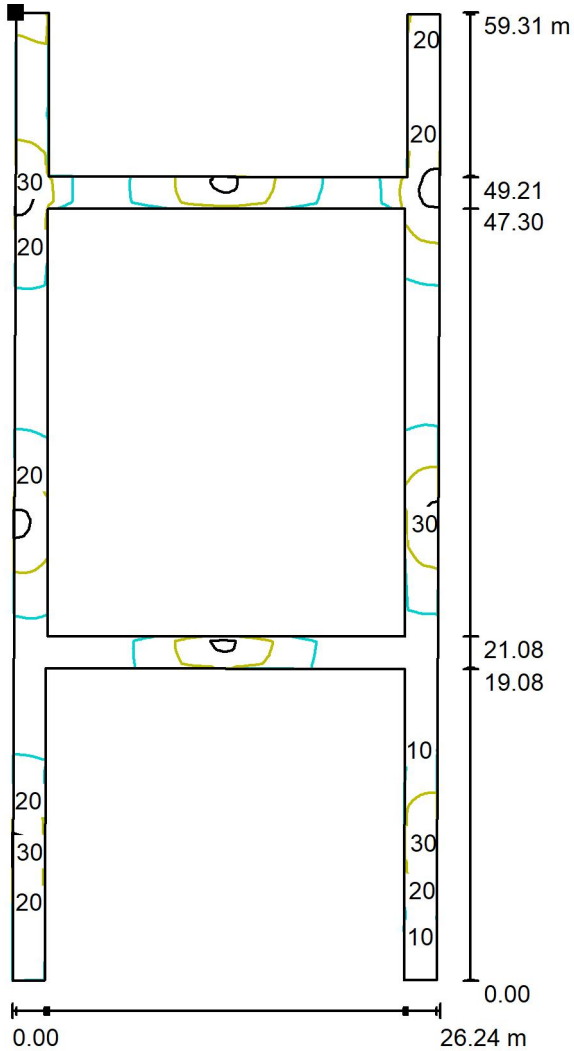


Grid: 185 x 5 Points

E_{av} [lx]	E_{min} [lx]	E_{max} [lx]	u0	E_{min} / E_{max}
15	3.14	33	0.203	0.094

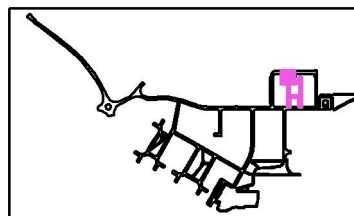


Exterior Scene 1 / Park Paths / Surface 1 / Isolines (E)



Values in Lux, Scale 1 : 464

Position of surface in external scene:
Marked point:
(349.883 m, 285.310 m, 0.000 m)

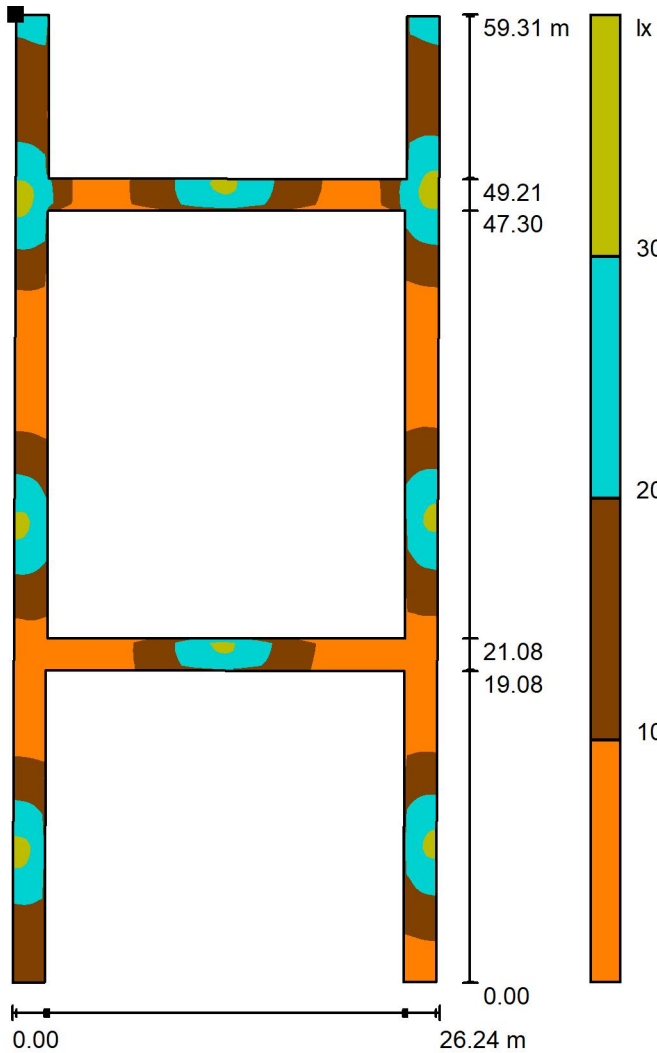


Grid: 128 x 128 Points

E_{av} [lx]	E_{min} [lx]	E_{max} [lx]	u0	E_{min} / E_{max}
15	4.44	33	0.290	0.133

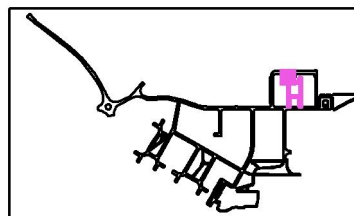


Exterior Scene 1 / Park Paths / Surface 1 / Greyscale (E)



Scale 1 : 464

Position of surface in external scene:
Marked point:
(349.883 m, 285.310 m, 0.000 m)

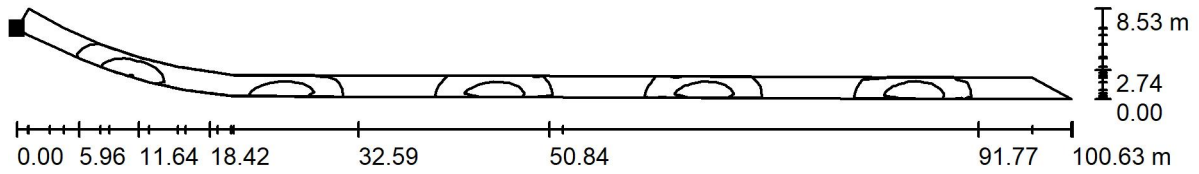


Grid: 128 x 128 Points

E_{av} [lx]	E_{min} [lx]	E_{max} [lx]	u0	E_{min} / E_{max}
15	4.44	33	0.290	0.133

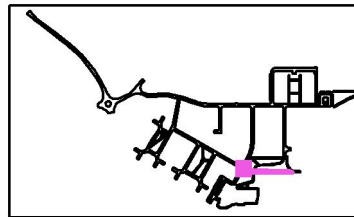


Exterior Scene 1 / Park Footpath / Surface 1 / Isolines (E)



Values in Lux, Scale 1 : 720

Position of surface in external scene:
Marked point:
(257.055 m, 87.748 m, 0.000 m)

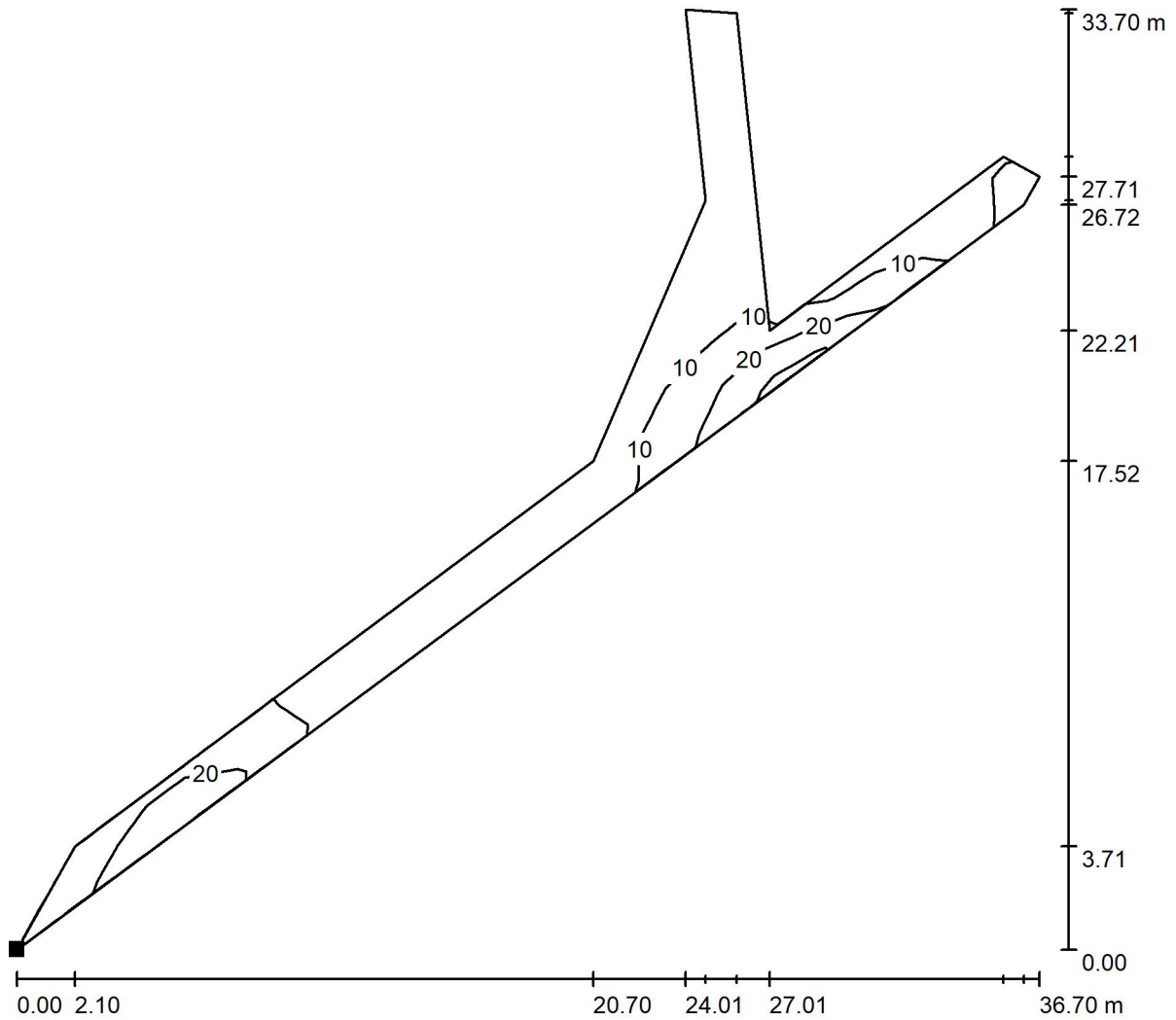


Grid: 128 x 16 Points

E_{av} [lx]	E_{min} [lx]	E_{max} [lx]	u0	E_{min} / E_{max}
13	2.78	31	0.220	0.091

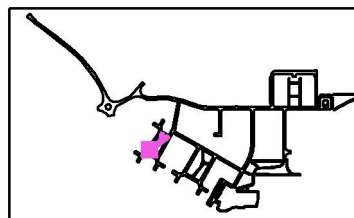


Exterior Scene 1 / Park Footpath / Surface 1 / Isolines (E)



Values in Lux, Scale 1 : 264

Position of surface in external scene:
 Marked point:
 (58.626 m, 133.531 m, 0.000 m)

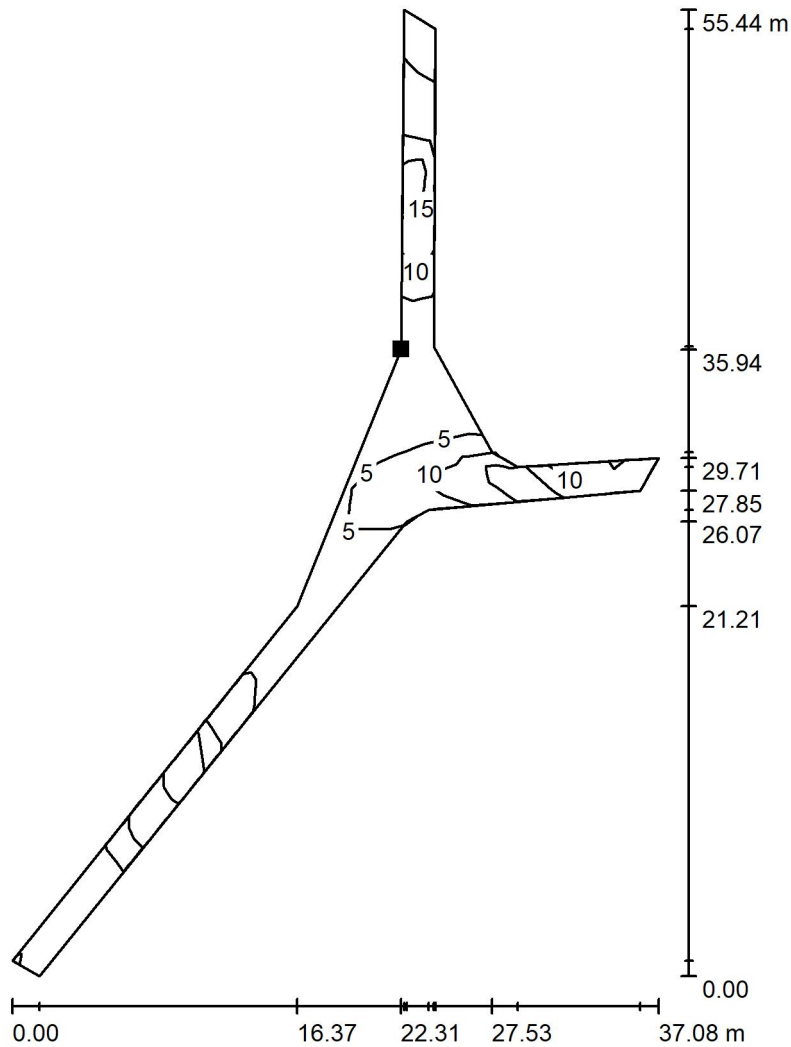


Grid: 27 x 9 Points

E_{av} [lx]	E_{min} [lx]	E_{max} [lx]	u0	E_{min} / E_{max}
9.79	1.62	28	0.165	0.059

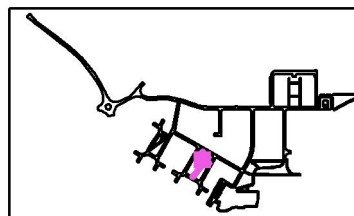


Exterior Scene 1 / Park Footpath / Surface 1 / Isolines (E)



Values in Lux, Scale 1 : 434

Position of surface in external scene:
 Marked point:
 (169.447 m, 113.208 m, 0.000 m)

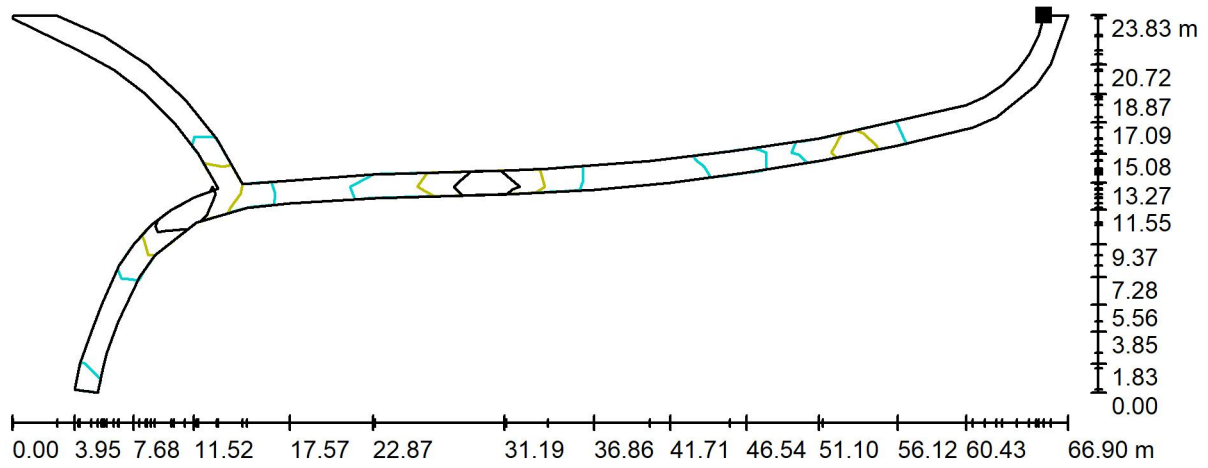


Grid: 29 x 11 Points

E_{av} [lx]	E_{min} [lx]	E_{max} [lx]	u0	E_{min} / E_{max}
8.94	1.73	27	0.194	0.065

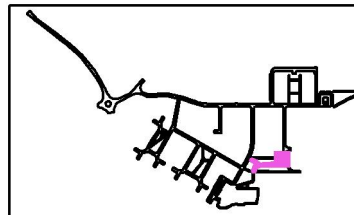


Exterior Scene 1 / Park Footpath / Surface 1 / Isolines (E)



Values in Lux, Scale 1 : 479

Position of surface in external scene:
Marked point:
(337.667 m, 107.211 m, 0.000 m)

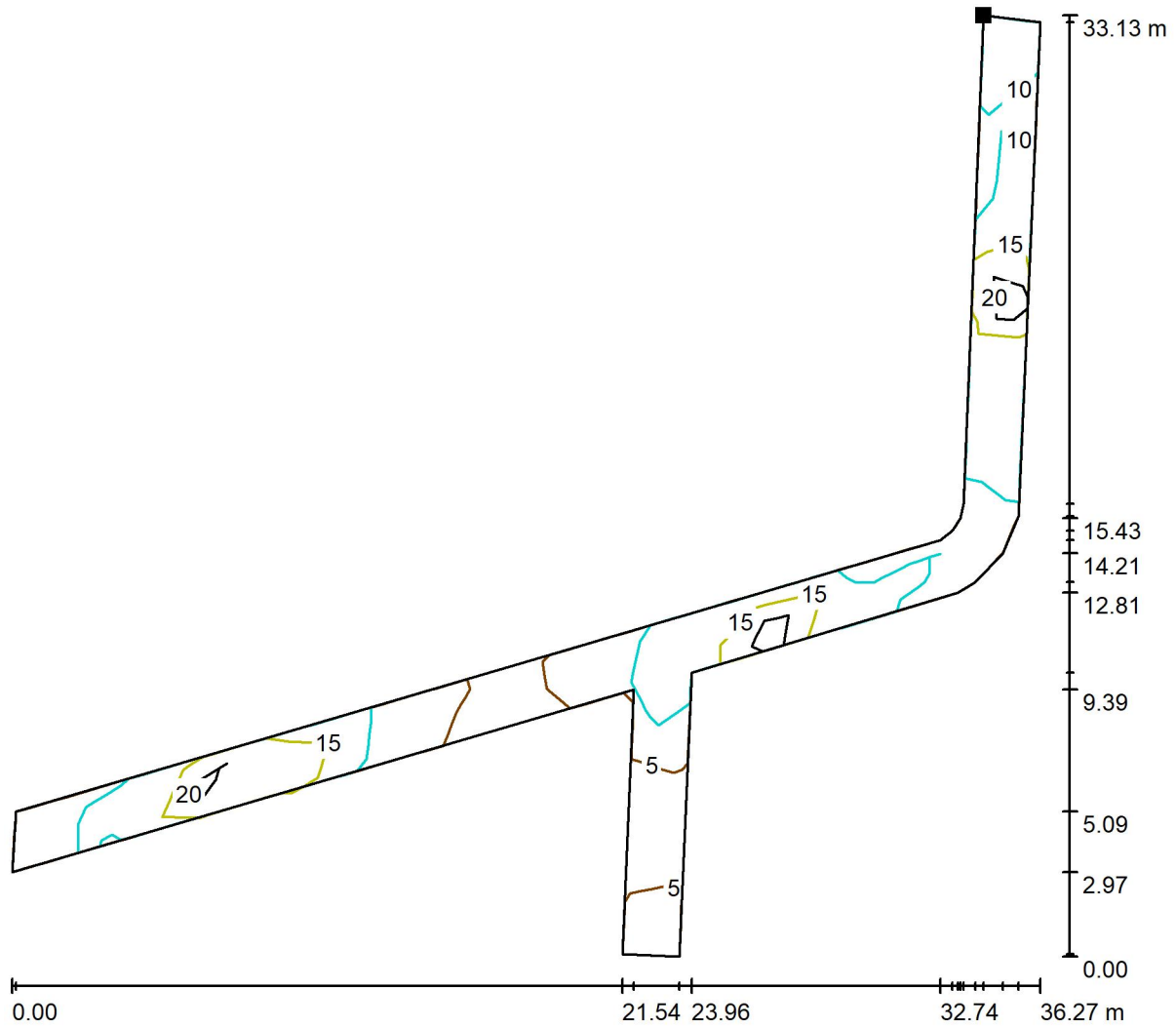


Grid: 29 x 11 Points

E_{av} [lx]	E_{min} [lx]	E_{max} [lx]	u0	E_{min} / E_{max}
8.88	1.08	22	0.122	0.050

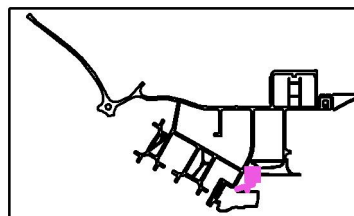


Exterior Scene 1 / Park Footpath / Surface 1 / Isolines (E)



Values in Lux, Scale 1 : 260

Position of surface in external scene:
Marked point:
(275.474 m, 81.658 m, 0.000 m)

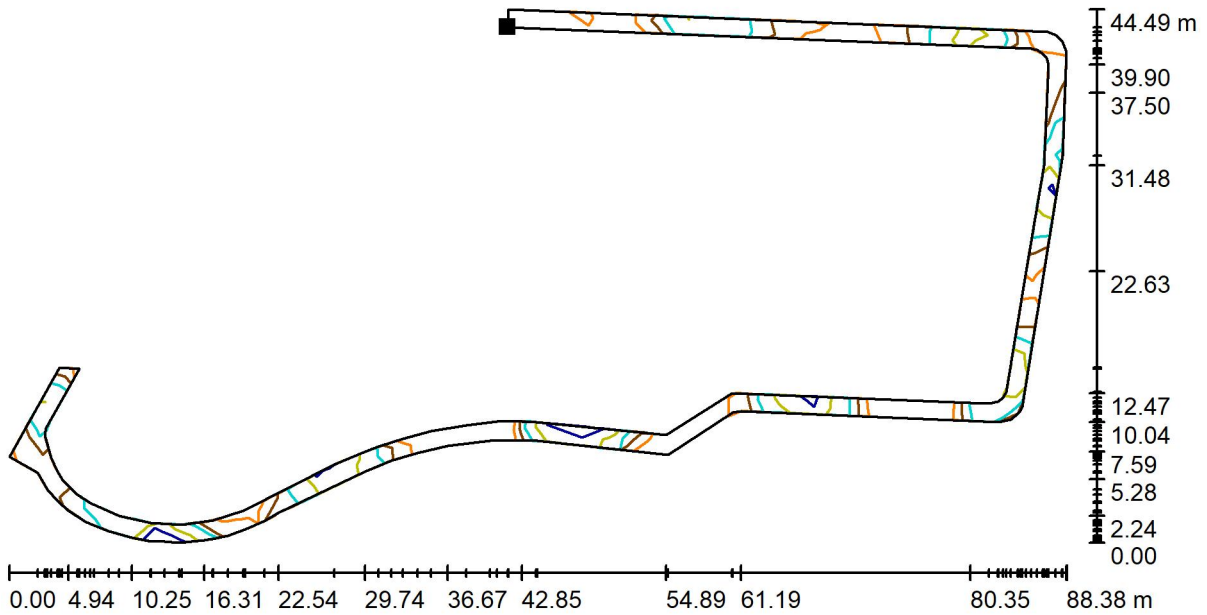


Grid: 27 x 11 Points

E_{av} [lx]	E_{min} [lx]	E_{max} [lx]	u0	E_{min} / E_{max}
13	2.56	28	0.203	0.091

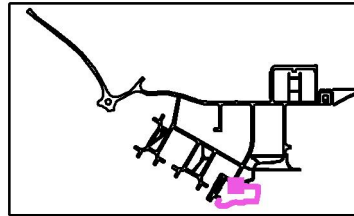


Exterior Scene 1 / Park Footpath / Surface 1 / Isolines (E)



Values in Lux, Scale 1 : 632

Position of surface in external scene:
Marked point:
(240.487 m, 48.020 m, 0.000 m)



Grid: 33 x 15 Points

E_{av} [lx]	E_{min} [lx]	E_{max} [lx]	u_0	E_{min} / E_{max}
15	2.34	31	0.159	0.077



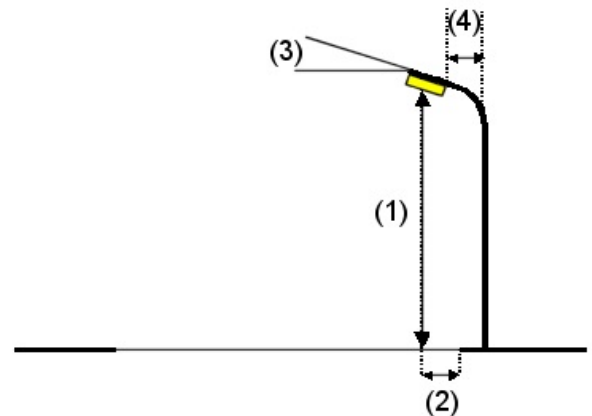
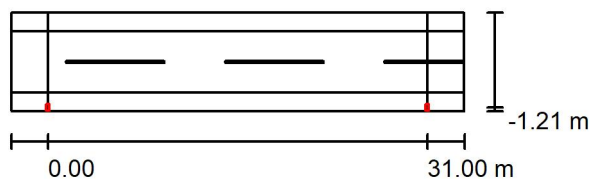
Street 1 / Planning data

Street Profile

Sidewalk 2 (Width: 1.500 m)
 Roadway 1 (Width: 5.000 m, Number of lanes: 2, tarmac: R3, q0: 0.070)
 Sidewalk 1 (Width: 1.500 m)

Maintenance factor: 0.80

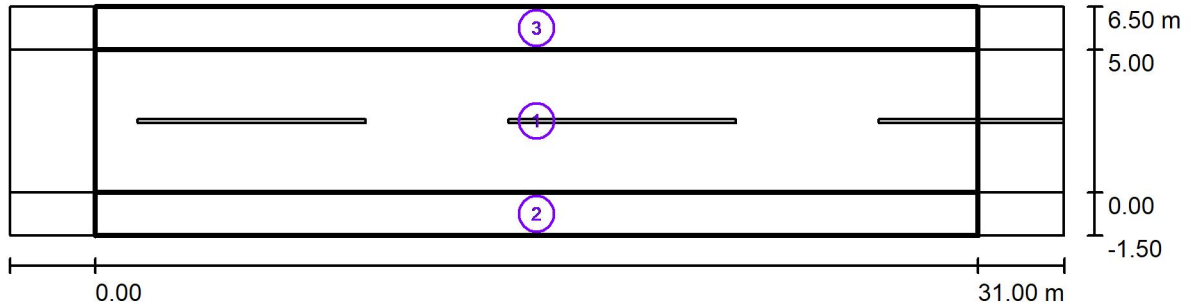
Luminaire Arrangements



Luminaire:	MICROPLUS GERMANY MPG-1N-30W	
Luminous flux (Luminaire):	4275 lm	Maximum luminous intensities
Luminous flux (Lamps):	4500 lm	at 70°: 425 cd/klm
Luminaire Wattage:	31.8 W	at 80°: 177 cd/klm
Arrangement:	Single row, bottom	at 90°: 6.90 cd/klm
Pole Distance:	31.000 m	Any direction forming the specified angle from the downward vertical, with the luminaire installed for use.
Mounting Height (1):	6.000 m	Arrangement complies with luminous intensity class G1.
Height:	5.900 m	Arrangement complies with glare index class D.6.
Overhang (2):	-1.200 m	
Boom Angle (3):	5.0 °	
Boom Length (4):	0.000 m	



Street 1 / Photometric Results



Maintenance factor: 0.80

Scale 1:265

Calculation Field List

- 1 Valuation Field Roadway 1
 Length: 31.000 m, Width: 5.000 m
 Grid: 11 x 4 Points
 Accompanying Street Elements: Roadway 1.
 Selected Lighting Class: S3 (All lighting performance requirements are met.)

Calculated values:	E_{av} [lx]	E_{min} [lx]
Required values according to class:	8.92	3.25
Fulfilled/Not fulfilled:	≥ 7.50	≥ 1.50
	✓	✓



Street 1 / Photometric Results

Calculation Field List

- 2 Valuation Field Sidewalk 1
 Length: 31.000 m, Width: 1.500 m
 Grid: 11 x 3 Points
 Accompanying Street Elements: Sidewalk 1.
 Selected Lighting Class: S2 (All lighting performance requirements are met.)

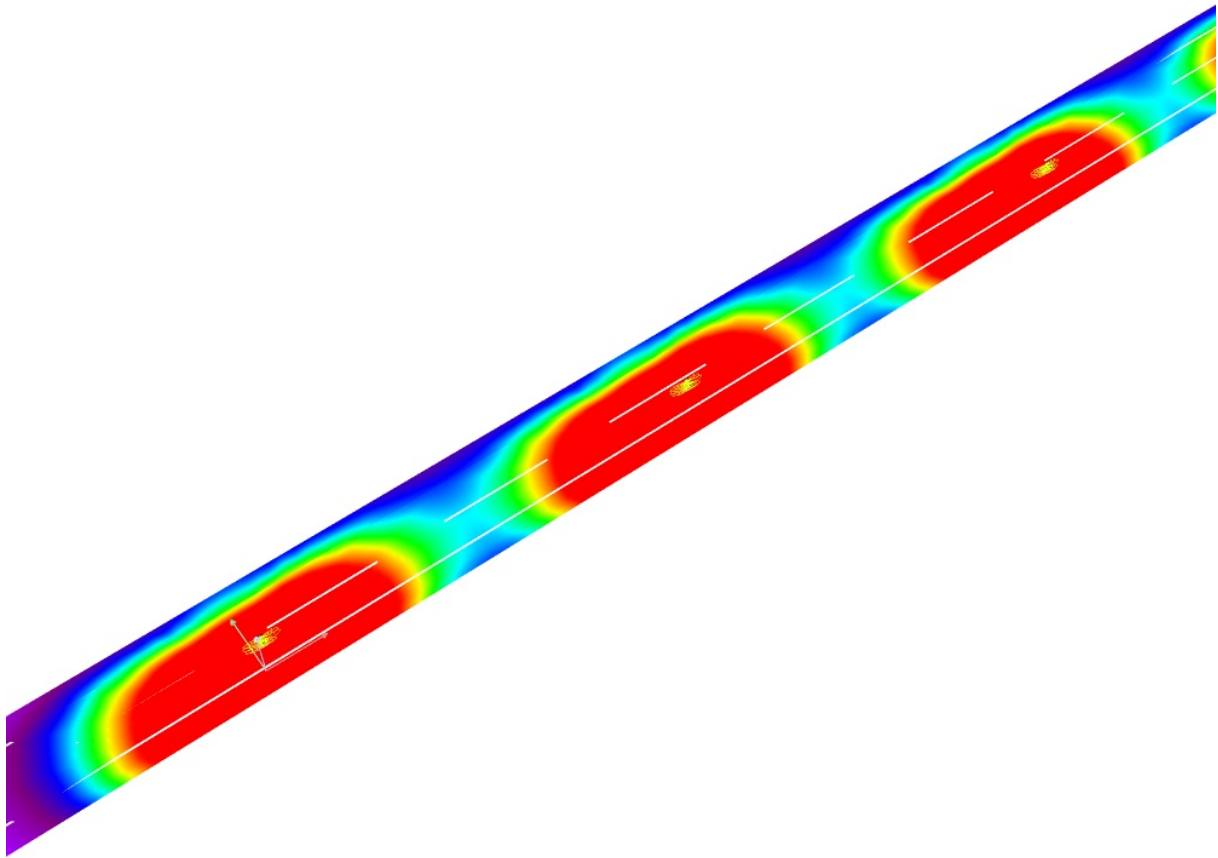
	E_{av} [lx]	E_{min} [lx]
Calculated values:	12.00	3.23
Required values according to class:	≥ 10.00	≥ 3.00
Fulfilled/Not fulfilled:	✓	✓

- 3 Valuation Field Sidewalk 2
 Length: 31.000 m, Width: 1.500 m
 Grid: 11 x 3 Points
 Accompanying Street Elements: Sidewalk 2.
 Selected Lighting Class: S5 (All lighting performance requirements are met.)

	E_{av} [lx]	E_{min} [lx]
Calculated values:	3.31	2.36
Required values according to class:	≥ 3.00	≥ 0.60
Fulfilled/Not fulfilled:	✓	✓



Street 1 / False Colour Rendering



0 0.94 1.88 2.81 3.75 4.69 5.63 6.56 7.50 lx



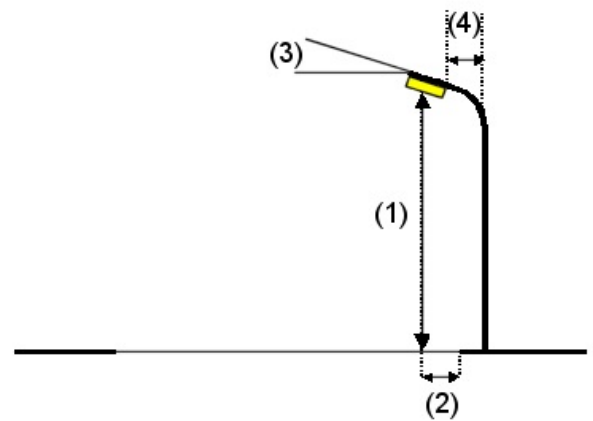
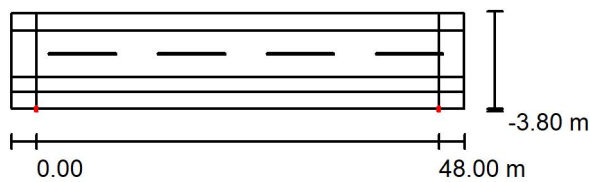
Street 2 / Planning data

Street Profile

Sidewalk 2	(Width: 2.000 m)
Roadway 1	(Width: 5.500 m, Number of lanes: 2, tarmac: R3, q0: 0.070)
Bicycle Lane 1	(Width: 1.800 m)
Sidewalk 1	(Width: 2.000 m)

Maintenance factor: 0.82

Luminaire Arrangements

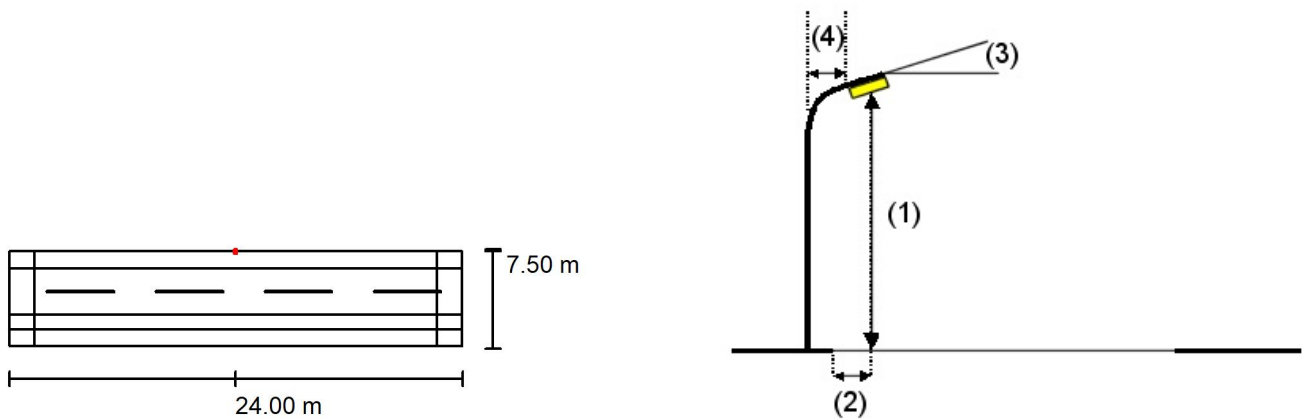


Luminaire:	MICROPLUS GERMANY MPG-1N-30W	
Luminous flux (Luminaire):	4275 lm	Maximum luminous intensities
Luminous flux (Lamps):	4500 lm	at 70°: 425 cd/klm
Luminaire Wattage:	31.8 W	at 80°: 177 cd/klm
Arrangement:	Single row, bottom	at 90°: 6.90 cd/klm
Pole Distance:	48.000 m	Any direction forming the specified angle from the downward vertical, with the luminaire installed for use.
Mounting Height (1):	6.000 m	Arrangement complies with luminous intensity class G1.
Height:	5.900 m	Arrangement complies with glare index class D.6.
Overhang (2):	-3.791 m	
Boom Angle (3):	5.0 °	
Boom Length (4):	0.000 m	



Street 2 / Planning data

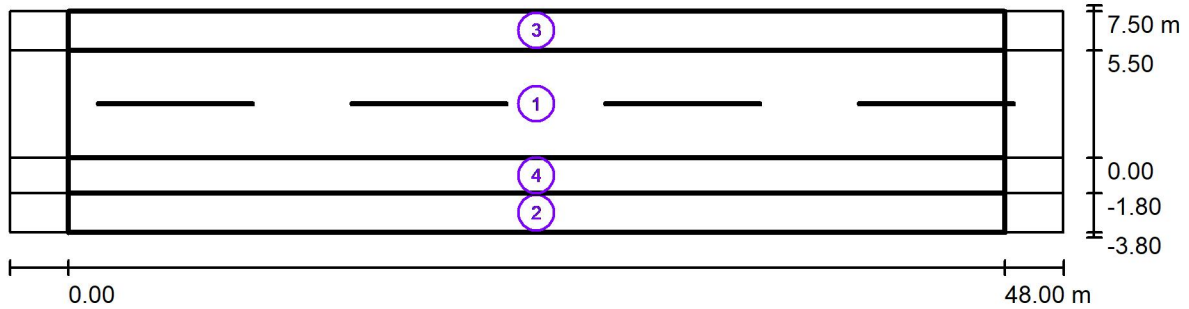
Luminaire Arrangements



Luminaire:	MICROPLUS GERMANY MPG-1N-30W	
Luminous flux (Luminaire):	4275 lm	Maximum luminous intensities
Luminous flux (Lamps):	4500 lm	at 70°: 425 cd/klm
Luminaire Wattage:	31.8 W	at 80°: 177 cd/klm
Arrangement:	Single row, top	at 90°: 6.90 cd/klm
Pole Distance:	48.000 m	Any direction forming the specified angle from the downward vertical, with the luminaire installed for use.
Mounting Height (1):	6.000 m	Arrangement complies with luminous intensity class G1.
Height:	5.900 m	Arrangement complies with glare index class D.6.
Overhang (2):	-1.991 m	
Boom Angle (3):	5.0 °	
Boom Length (4):	0.000 m	



Street 2 / Photometric Results



Maintenance factor: 0.82

Scale 1:387

Calculation Field List

- 1 Valuation Field Roadway 1
 Length: 48.000 m, Width: 5.500 m
 Grid: 16 x 4 Points
 Accompanying Street Elements: Roadway 1.
 Selected Lighting Class: S3 (All lighting performance requirements are met.)

Calculated values:	E_{av} [lx]	E_{min} [lx]
Required values according to class:	7.65	2.69
Fulfilled/Not fulfilled:	≥ 7.50	≥ 1.50
	✓	✓



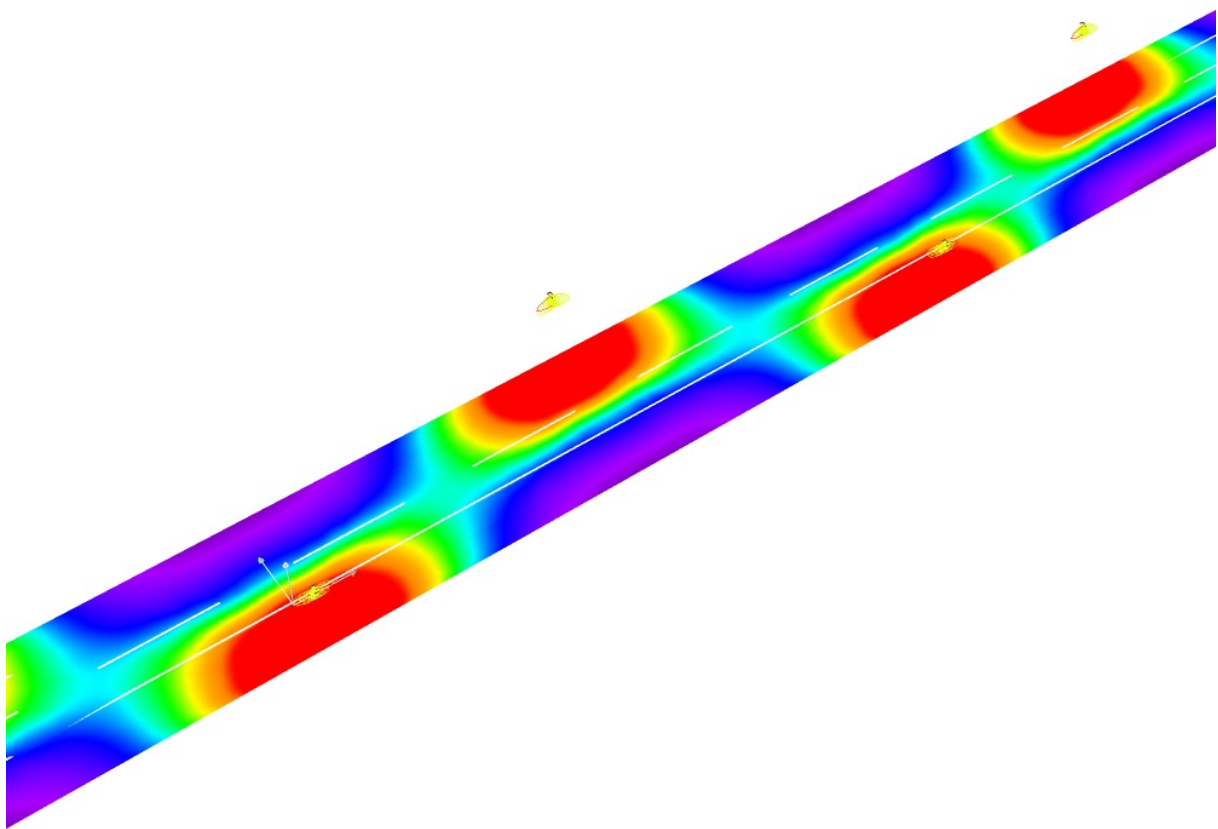
Street 2 / Photometric Results

Calculation Field List

2	Valuation Field Sidewalk 1 Length: 48.000 m, Width: 2.000 m Grid: 16 x 3 Points Accompanying Street Elements: Sidewalk 1. Selected Lighting Class: S3	(All lighting performance requirements are met.)		
	Calculated values:		E_{av} [lx]	E_{min} [lx]
	Required values according to class:		8.69	1.57
	Fulfilled/Not fulfilled:		≥ 7.50	≥ 1.50
			✓	✓
3	Valuation Field Sidewalk 2 Length: 48.000 m, Width: 2.000 m Grid: 16 x 3 Points Accompanying Street Elements: Sidewalk 2. Selected Lighting Class: S3	(All lighting performance requirements are met.)		
	Calculated values:		E_{av} [lx]	E_{min} [lx]
	Required values according to class:		8.69	1.57
	Fulfilled/Not fulfilled:		≥ 7.50	≥ 1.50
			✓	✓
4	Valuation Field Bicycle Lane 1 Length: 48.000 m, Width: 1.800 m Grid: 16 x 3 Points Accompanying Street Elements: Bicycle Lane 1. Selected Lighting Class: S3	(All lighting performance requirements are met.)		
	Calculated values:		E_{av} [lx]	E_{min} [lx]
	Required values according to class:		8.27	2.48
	Fulfilled/Not fulfilled:		≥ 7.50	≥ 1.50
			✓	✓



Street 2 / False Colour Rendering



0 0.94 1.88 2.81 3.75 4.69 5.63 6.56 7.50 lx